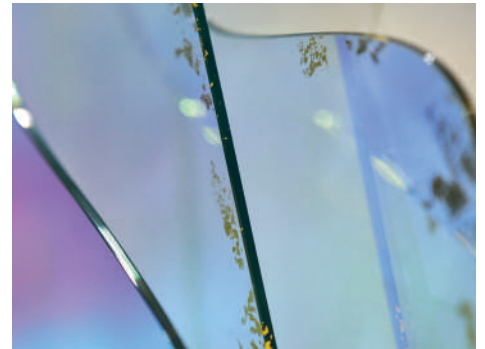
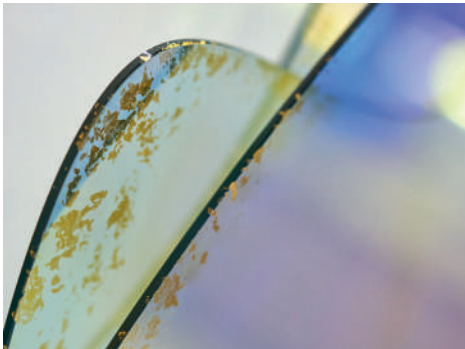


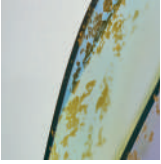
## ASPECTU MIRROR



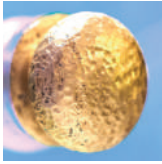
Created with layers of a semi-reflective transparent mirror with a gold leaf dispersion evoking elegance, the Aspectu Mirror helps reflect delicate details. The ethereal beauty of the Aspectu is gracefully flecked through with an elegant gold leaf dispersion. The delicate nature of the mirror is purposefully brutalised using a bronze planished rod, which fixes the different layers into place.



## ASPECTU MIRROR



TRANSPARENT  
MIRROR WITH  
GOLD LEAF



HAMMERED  
CAST  
BRONZE

ALTERNATIVE FINISH COMBINATIONS AVAILABLE, SEE FBC LONDON FINISHES LOOKBOOK FOR REFERENCE OR CONTACT FBC LONDON TO SPECIFY BESPOKE FINISHES FOR YOUR ORDER.

(BESPOKE DESIGN FEE CHARGES MAY BE APPLICABLE)

### DIMENSIONS

1048mm H x 892mm W x 160mm D  
41.3in H x 35.1in W x 6.3in D

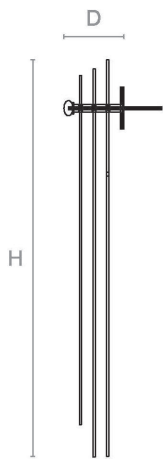
### NOTES

This piece can be tailor made to bespoke sizes and finishes, please enquire for further details.

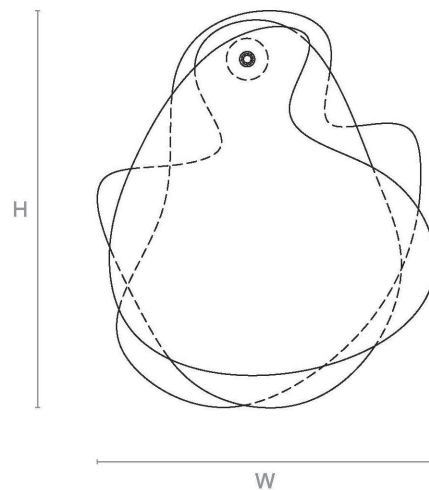
### FINISHES VARIATIONS

FBC London products are fabricated to the highest quality. The majority of finishes are made and finished by hand and thus some variation is to be expected. FBC London works closely with our fabricators to assure all the finishes are to our typical high standards and closely align to FBC master references. With finishes of natural material such as wood and stone inherent disparities in colour and grain pattern because of variations caused by nature, over which FBC London has no control. FBC London cannot guarantee exact colour, grain, or texture of wood or stone but will work closely with you as our client to highlight this where necessary.

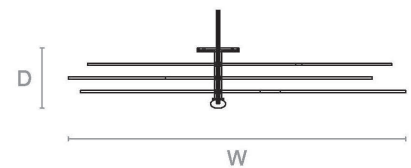
## LINE DRAWINGS



Side Elevation



Front Elevation



Plan