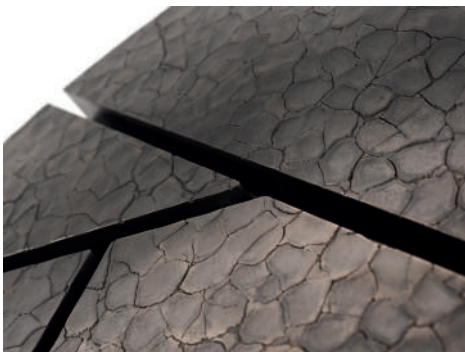


## AURORA COFFEE TABLE

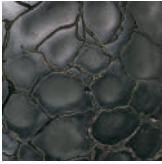


Featuring Cracked Earth, one of our specialist finishes. Its deeply textural nature is reminiscent of the dried out and fissured earth Fiona was inspired by during a safari trip in South Africa. The textured segmented top is complimented by the strong, metal geometric base.

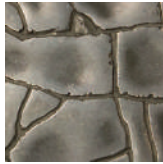


# AURORA COFFEE TABLE

## FINISH OPTIONS - TOP



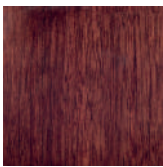
BRONZE  
CRACKED  
EARTH



PEWTER  
CRACKED  
EARTH



GOLD  
CRACKED  
EARTH

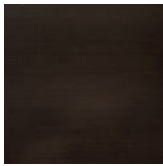


HIGH GLOSS  
WALNUT



MID-BROWN  
OAK

## FINISH OPTIONS - BASE



BRONZE  
FINISH



BRASS  
FINISH

ALTERNATIVE FINISH COMBINATIONS  
AVAILABLE, SEE FBC LONDON FINISHES  
LOOKBOOK FOR REFERENCE OR CONTACT  
FBC LONDON TO SPECIFY BESPOKE FINISHES  
FOR YOUR ORDER.

(BESPOKE DESIGN FEE CHARGES MAY BE APPLICABLE)

## DIMENSIONS

### SIZE I

390mm H x 1540mm W x 900mm D  
15.4in H x 60.6in W x 35.4in D

### SIZE II

390mm H x 2000mm W x 900mm D  
15.4in H x 78.7in W x 35.4in D

## NOTES

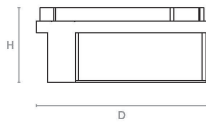
This piece can be tailor made to bespoke sizes and finishes, please enquire for further details.

## FINISHES VARIATIONS

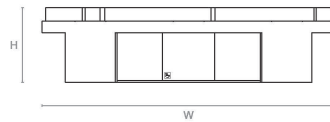
FBC London products are fabricated to the highest quality. The majority of finishes are made and finished by hand and thus some variation is to be expected. FBC London works closely with our fabricators to assure all the finishes are to our typical high standards and closely align to FBC master references. With finishes of natural material such as wood and stone inherent disparities in colour and grain pattern because of variations caused by nature, over which FBC London has no control. FBC London cannot guarantee exact colour, grain, or texture of wood or stone but will work closely with you as our client to highlight this where necessary.

## LINE DRAWINGS

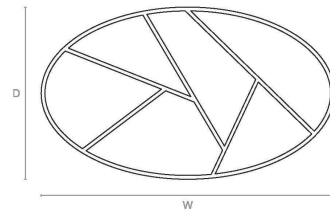
### SIZE I



Side Elevation



Front Elevation



Plan

### SIZE II

