

BYETHORNE CABINET



The Byethorne Cabinet features a solid oak body, Silky Oak finish with brass details, a red lacquer interior. The specialist Silky Oak finish is used throughout the Byethorne series and one of our most admired finishes. Silky Oak is a natural timber with smooth rippling waves running throughout. A white wash is added over the top in order to create warming tones and soft textures. Finished by sanding back and exposing the natural dark waves of the wood with white pockets.



BYETHORNE CABINET



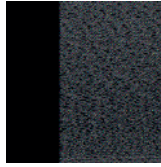
NATURAL SILKY OAK DOORS



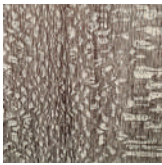
STONE-GREY OAK BODY



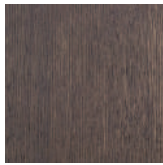
BRASS FINISH DETAILS



RED LACQUER INTERNALS



MID BROWN SILKY OAK DOORS



MID-BROWN OAK BODY



BRASS FINISH DETAILS



NIGHT-BLUE LACQUER INTERNALS

ALTERNATIVE FINISH COMBINATIONS AVAILABLE, SEE FBC LONDON FINISHES LOOKBOOK FOR REFERENCE OR CONTACT FBC LONDON TO SPECIFY BESPOKE FINISHES FOR YOUR ORDER.

(BESPOKE DESIGN FEE CHARGES MAY BE APPLICABLE)

DIMENSIONS

SIZE I

2000mm H x 1240mm W x 525mm D
78.7in H x 48.8in W x 20.7in D

SIZE II

2000mm H x 1540mm W x 525mm D
78.7in H x 60.6in W x 20.7in D

NOTES

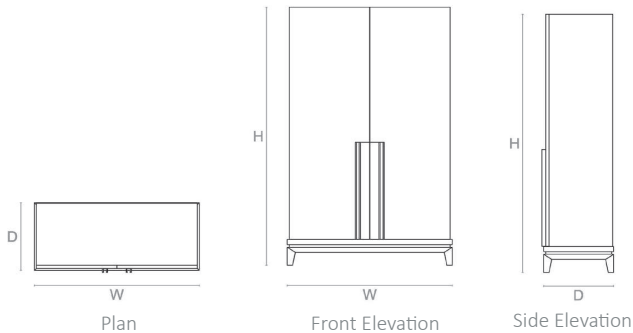
This piece can be tailor made to bespoke sizes and finishes, please enquire for further details.

FINISHES VARIATIONS

FBC London products are fabricated to the highest quality. The majority of finishes are made and finished by hand and thus some variation is to be expected. FBC London works closely with our fabricators to assure all the finishes are to our typical high standards and closely align to FBC master references. With finishes of natural material such as wood and stone inherent disparities in colour and grain pattern because of variations caused by nature, over which FBC London has no control. FBC London cannot guarantee exact colour, grain, or texture of wood or stone but will work closely with you as our client to highlight this where necessary.

LINE DRAWINGS

SIZE I



SIZE II

