

BYETHORNE MEDIA UNIT



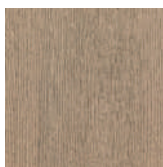
The Byethorne Media Unit is enhanced with the signature Silky Oak finish of the Byethorne range. Featuring brass strips, bringing a sense of industrial chic to the delicate and gentile style of the white-washed Silky Oak. Available in bespoke sizes, FBC London media units are designed to hold an automated television lift mechanism, please contact us to discuss specific requirements and television dimensions.



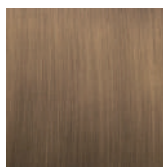
BYETHORNE MEDIA UNIT



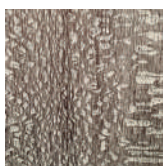
NATURAL SILKY
OAK PANEL



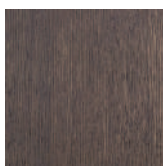
STONE-GREY
OAK BODY



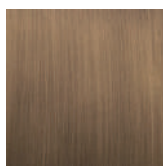
BRASS FINISH
DETAILS



MID BROWN
OAK PANEL



MID-BROWN
OAK BODY



BRASS FINISH
DETAILS

ALTERNATIVE FINISH COMBINATIONS AVAILABLE, SEE FBC LONDON FINISHES LOOKBOOK FOR REFERENCE OR CONTACT FBC LONDON TO SPECIFY BESPOKE FINISHES FOR YOUR ORDER.

(BESPOKE DESIGN FEE CHARGES MAY BE APPLICABLE)

DIMENSIONS

Screen Sizes [approx] 55" - 60"
1100mm H x 1600mm W x 320mm D
43.3in H x 63in W x 12.6in D

TV MECHANISM

Client to specify TV lift mechanism
FBC recommend Future Automation : LSM-EFA6 Television mechanism not included.

NOTES

This piece can be tailor made to bespoke sizes and finishes, please enquire for further details.

FINISHES VARIATIONS

FBC London products are fabricated to the highest quality. The majority of finishes are made and finished by hand and thus some variation is to be expected. FBC London works closely with our fabricators to assure all the finishes are to our typical high standards and closely align to FBC master references. With finishes of natural material such as wood and stone inherent disparities in colour and grain pattern because of variations caused by nature, over which FBC London has no control. FBC London cannot guarantee exact colour, grain, or texture of wood or stone but will work closely with you as our client to highlight this where necessary.

LINE DRAWINGS

