

BYETHORNE WARDROBE



Through the popularity of the Byethorne Cabinet, FBC London has created the Byethorne Wardrobe. Made using the textural Silky Oak finish, a natural timber with concurrent waves throughout with contrasting timber carcass. Coated internally in a bright high gloss lacquer and a metal hanging rail running along the top, above storage shelves and pull out drawers.



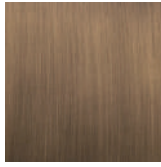
BYETHORNE WARDROBE



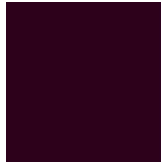
NATURAL SILKY OAK SURFACE



STONE-GREY OAK BODY



BRASS FINISH DETAILS



RED INTERNAL SURFACES

DIMENSIONS

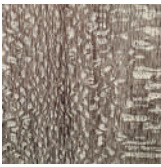
2000mm H x 1540mm W x 650mm D
78.7in H x 60.6in W x 25.6in D

NOTES

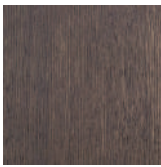
This piece can be tailor made to bespoke sizes and finishes, please enquire for further details.

FINISHES VARIATIONS

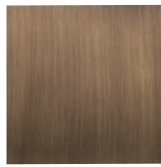
FBC London products are fabricated to the highest quality. The majority of finishes are made and finished by hand and thus some variation is to be expected. FBC London works closely with our fabricators to assure all the finishes are to our typical high standards and closely align to FBC master references. With finishes of natural material such as wood and stone inherent disparities in colour and grain pattern because of variations caused by nature, over which FBC London has no control. FBC London cannot guarantee exact colour, grain, or texture of wood or stone but will work closely with you as our client to highlight this where necessary.



MID-BROWN SILKY OAK SURFACES



MID-BROWN OAK BODY



BRASS FINISH DETAILS



NAVY INTERNAL SURFACES

ALTERNATIVE FINISH COMBINATIONS AVAILABLE, SEE FBC LONDON FINISHES LOOKBOOK FOR REFERENCE OR CONTACT FBC LONDON TO SPECIFY BESPOKE FINISHES FOR YOUR ORDER.

(BESPOKE DESIGN FEE CHARGES MAY BE APPLICABLE)

LINE DRAWINGS

