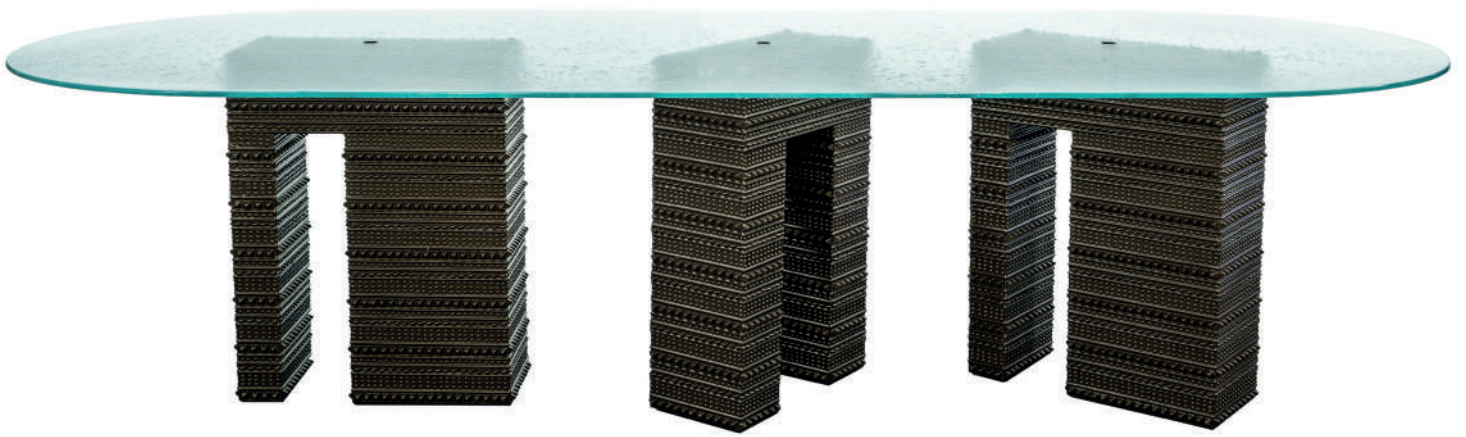
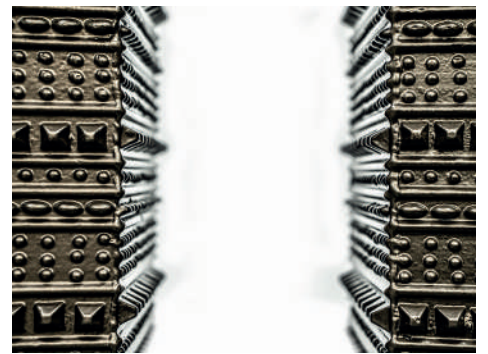
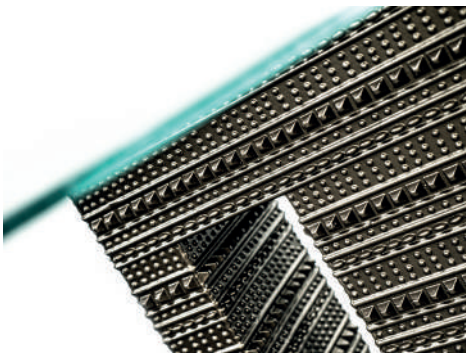


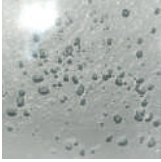
## FORTIS DINING TABLE



Fortis derived from the Latin meaning strong is reflected in the strength & structure of the piece. The strong geometrical Bronze armour patterned bases support the delicately placed squoval glass top of the Fortis Dining Table like pillars  
Variable configurations available.



# FORTIS DINING TABLE



CLEAR SEEDED  
GLASS TOP



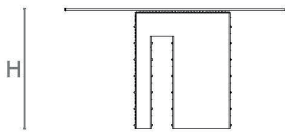
ANODIC BROWN  
ARMOUR XL BASE

ALTERNATIVE FINISH COMBINATIONS AVAILABLE, SEE FBC LONDON FINISHES LOOKBOOK FOR REFERENCE OR CONTACT FBC LONDON TO SPECIFY BESPOKE FINISHES FOR YOUR ORDER.

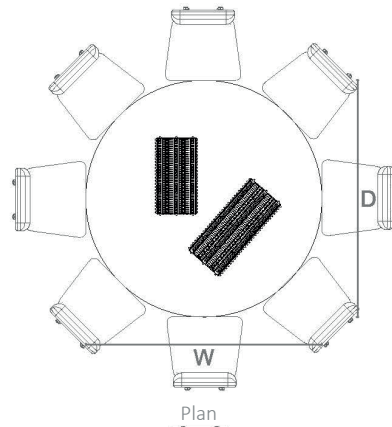
(BESPOKE DESIGN FEE CHARGES MAY BE APPLICABLE)

## LINE DRAWINGS

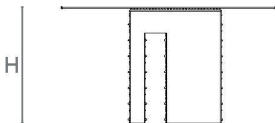
SIZE I



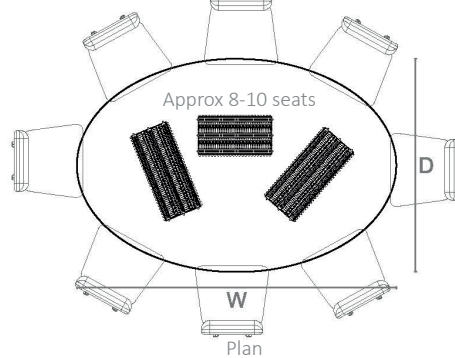
Side Elevation



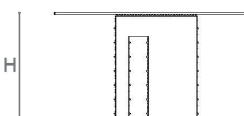
SIZE II



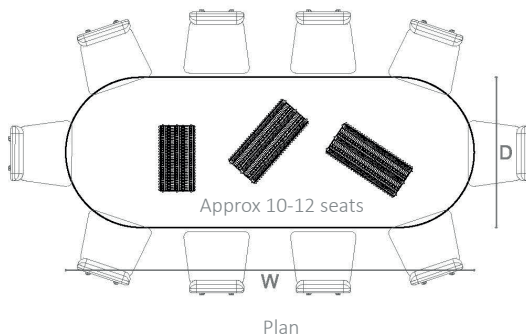
Side Elevation



SIZE III



Side Elevation



## DIMENSIONS

SIZE I - Two Base - Round  
760mm H x 1500mm W x 1200mm D  
29.9in H X 59.1in W x 47.2in D

SIZE II - Three Bases - Oval  
760mm H x 2100mm W x 1200mm D  
29.9in H X 82.7in W X 47.2in D

SIZE III - Three Bases - Squoval  
760mm H x 3000mm W x 1200mm D  
29.9in H X 118.1in W X 47.2in D

## NOTES

This piece can be tailor made to bespoke sizes and finishes, please enquire for further details.

## FINISHES VARIATIONS

FBC London products are fabricated to the highest quality. The majority of finishes are made and finished by hand and thus some variation is to be expected. FBC London works closely with our fabricators to assure all the finishes are to our typical high standards and closely align to FBC master references. With finishes of natural material such as wood and stone inherent disparities in colour and grain pattern because of variations caused by nature, over which FBC London has no control. FBC London cannot guarantee exact colour, grain, or texture of wood or stone but will work closely with you as our client to highlight this where necessary.