

MILAN DESK



The Milan Desk is made from solid European oak with an inbuilt cable tidy, concealed socket tray and leather lined pencil tray. The brass detailing feature forms an abstract landscape evoking a nod to a city scape.



MILAN DESK



MID-BROWN OAK BODY



BRASS FINISH DETAILS



COM 1



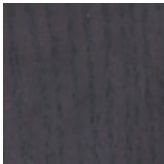
TAUPE-METALLIC OAK BODY



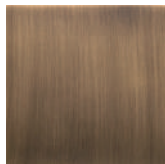
BRONZE FINISH DETAILS



COM 1



CHOCOLATE-BROWN OAK BODY



BRASS FINISH DETAILS



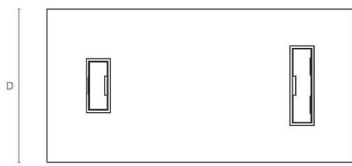
COM 1

ALTERNATIVE FINISH COMBINATIONS AVAILABLE, SEE FBC LONDON FINISHES LOOKBOOK FOR REFERENCE OR CONTACT FBC LONDON TO SPECIFY BESPOKE FINISHES FOR YOUR ORDER.

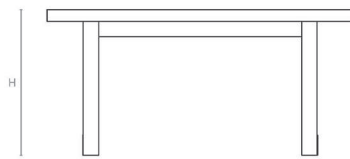
(BESPOKE DESIGN FEE CHARGES MAY BE APPLICABLE)

LINE DRAWINGS

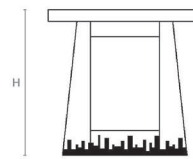
SIZE I



Plan



Front Elevation



Side Elevation

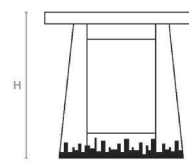
SIZE II



Plan



Front Elevation



Side Elevation

DIMENSIONS

SIZE I

760mm H x 1600mm W x 800mm D
29.9in H x 63in W x 31.5in D

SIZE II

760mm H x 1800mm W x 800mm D
29.9in H x 70.9in W x 31.5in D

FABRIC SPECIFICATIONS

Upholstered items may be ordered using customer's own fabric or leather.

COM plain fabric 54": 0.5m | 0.5 yards
COL: 0.5m | 0.5 yards

Specialty COM, Patterns, velvet or other: Please inquire.

NOTES

This piece can be tailor made to bespoke sizes and finishes, please enquire for further details.

FINISHES VARIATIONS

FBC London products are fabricated to the highest quality. The majority of finishes are made and finished by hand and thus some variation is to be expected. FBC London works closely with our fabricators to assure all the finishes are to our typical high standards and closely align to FBC master references. With finishes of natural material such as wood and stone inherent disparities in colour and grain pattern because of variations caused by nature, over which FBC London has no control. FBC London cannot guarantee exact colour, grain, or texture of wood or stone but will work closely with you as our client to highlight this where necessary.

MINERVA DESK



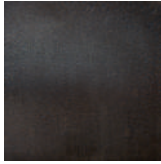
Inspired by age-old beliefs and emphasised with modern design, the Minerva Desk takes its name from the Roman Goddess of wisdom, poetry and the arts. The shape of the base is reminiscent of a dissected bell. The Minerva features a smooth high gloss oak top which contrasts with the rough nature of the cast bronze legs. The underside of the top features a secret finger pull which unveils a drawer at the front.



MINERVA DESK



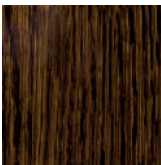
HIGH GLOSS
ZIRCOT



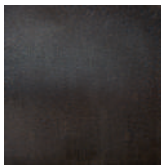
CAST BRONZE
BASE



COM 1- OPTIONAL
DRAWER LINING



HIGH GLOSS OAK
TOP



CAST BRONZE
BASE



COM 1- OPTIONAL
DRAWER LINING

ALTERNATIVE FINISH COMBINATIONS AVAILABLE, SEE FBC LONDON FINISHES LOOKBOOK FOR REFERENCE OR CONTACT FBC LONDON TO SPECIFY BESPOKE FINISHES FOR YOUR ORDER.

(BESPOKE DESIGN FEE CHARGES MAY BE APPLICABLE)

DIMENSIONS

SIZE I

760mm H x 1600mm W x 750mm D
29.9in H x 63in W x 29.5in D

SIZE II

760mm H x 1800 W x 750mm D
29.9in H x 63in W x 29.5in D

FABRIC SPECIFICATIONS

Upholstered items may be ordered using customer's own fabric or leather.

COM plain fabric 54": 0.5m | 0.5 yards
COL: 0.5m | 0.5 yards

Specialty COM, Patterns, velvet or other: Please inquire.

NOTES

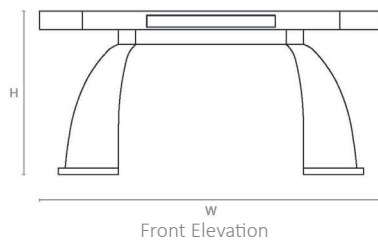
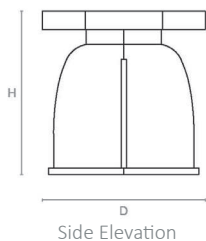
This piece can be tailor made to bespoke sizes and finishes, please enquire for further details.

FINISHES VARIATIONS

FBC London products are fabricated to the highest quality. The majority of finishes are made and finished by hand and thus some variation is to be expected. FBC London works closely with our fabricators to assure all the finishes are to our typical high standards and closely align to FBC master references. With finishes of natural material such as wood and stone inherent disparities in colour and grain pattern because of variations caused by nature, over which FBC London has no control. FBC London cannot guarantee exact colour, grain, or texture of wood or stone but will work closely with you as our client to highlight this where necessary.

LINE DRAWINGS

SIZE I



SIZE II

