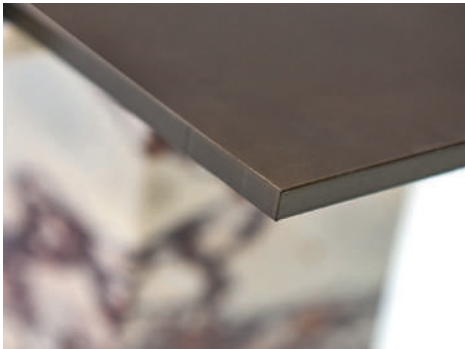


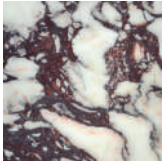
## ROME CONSOLE



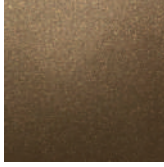
Rome Console is constructed from Calcutta Viola marble and simple metal detailing trim to the base. The Bronze patina top bridges and the two bases, held together with the gentle lipped marble detail.



## ROME CONSOLE



CALACATTA  
VIOLA MARBLE  
BODY



BRONZE  
POWDER COATED  
ALUMINIUM TOP  
& DETAIL TO BASE

ALTERNATIVE FINISH COMBINATIONS AVAILABLE, SEE FBC LONDON FINISHES LOOKBOOK FOR REFERENCE OR CONTACT FBC LONDON TO SPECIFY BESPOKE FINISHES FOR YOUR ORDER.

(BESPOKE DESIGN FEE CHARGES MAY BE APPLICABLE)

### DIMENSIONS

850mm H x 1750mm W x 470mm D  
33.5in H x 68.9in W x 18.5in D

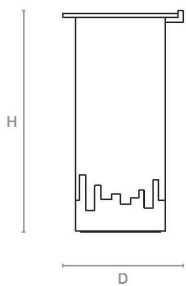
### NOTES

This piece can be tailor made to bespoke sizes and finishes, please enquire for further details.

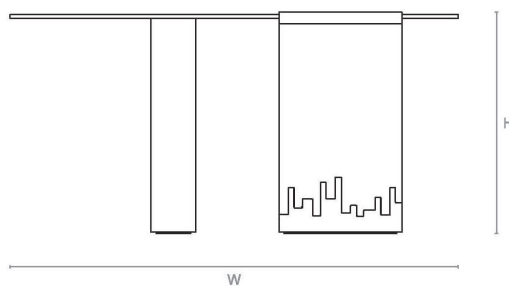
### FINISHES VARIATIONS

FBC London products are fabricated to the highest quality. The majority of finishes are made and finished by hand and thus some variation is to be expected. FBC London works closely with our fabricators to assure all the finishes are to our typical high standards and closely align to FBC master references. With finishes of natural material such as wood and stone inherent disparities in colour and grain pattern because of variations caused by nature, over which FBC London has no control. FBC London cannot guarantee exact colour, grain, or texture of wood or stone but will work closely with you as our client to highlight this where necessary.

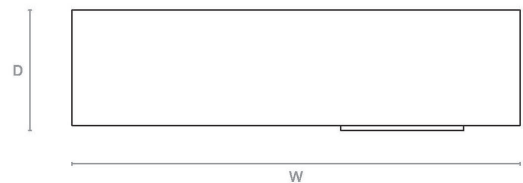
## LINE DRAWINGS



Side Elevation



Front Elevation



Plan