

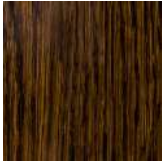
ST BARTHS SIDE TABLE



St. Barths is made with soft curves forming the base which evokes smooth waves and undulating sands. The contrast of the dark timber features gives definition to the wide base and a flush pull-out drawer.



ST BARTHS SIDE TABLE



HIGH GLOSS OAK
TOP & BASE



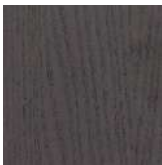
WHITE OAK LEGS



HIGH GLOSS
WALNUT TOP &
BASE



STONE-GREY OAK
LEGS



CHOCOLATE-
BROWN OAK TOP
& BASE

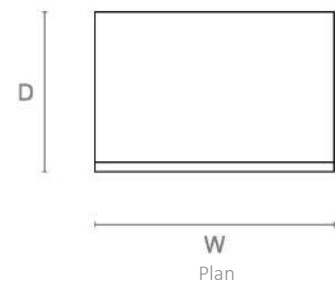
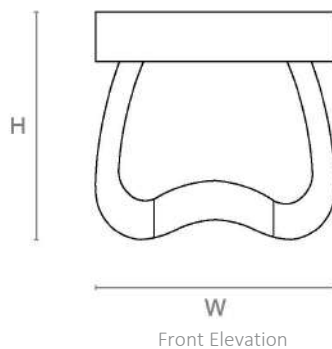
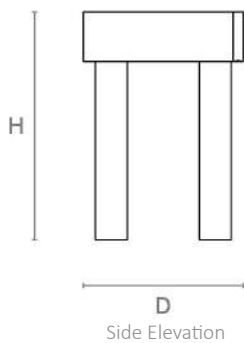


WHITE-GREY
WALNUT LEGS

ALTERNATIVE FINISH COMBINATIONS AVAILABLE, SEE FBC LONDON FINISHES LOOKBOOK FOR REFERENCE OR CONTACT FBC LONDON TO SPECIFY BESPOKE FINISHES FOR YOUR ORDER.

(BESPOKE DESIGN FEE CHARGES MAY BE APPLICABLE)

LINE DRAWINGS



DIMENSIONS

570mm H x 600mm W x 400mm D
22.4in H x 23.6in W x 15.7in D

NOTES

This piece can be tailor made to bespoke sizes and finishes, please enquire for further details.

FINISHES VARIATIONS

FBC London products are fabricated to the highest quality. The majority of finishes are made and finished by hand and thus some variation is to be expected. FBC London works closely with our fabricators to assure all the finishes are to our typical high standards and closely align to FBC master references. With finishes of natural material such as wood and stone inherent disparities in colour and grain pattern because of variations caused by nature, over which FBC London has no control. FBC London cannot guarantee exact colour, grain, or texture of wood or stone but will work closely with you as our client to highlight this where necessary.