

ANGELINA LOUNGE CHAIR

OUTDOOR COLLECTION

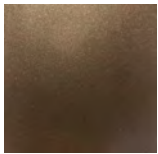


The Angelina Lounge Chair is designed to embrace the smooth and fluid lines and evoke an understated elegance. The addition of the Aluminium cast foot adds contrast and interest to the simplistic rounded upholstery form.



ANGELINA LOUNGE CHAIR

FINISH OPTIONS - BASE



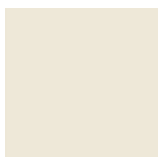
BRONZE FINISH



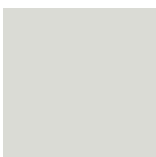
BRUSHED ALUMINIUM



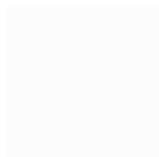
CUSTOM RAL or PANTONE COLOUR



CREAM RAL 9001



GREY WHITE RAL 9002



SIGNAL WHITE RAL 9003

UPHOLSTERY OPTIONS



COM

DIMENSIONS

750mm H x 775mm x 930mm x D 420mm SH x 630mm SD
 29.53in H x 30.51in W x 36.61in D 16.54in SH x 24.80in SD

FABRIC SPECIFICATIONS

Upholstered items may be ordered using customer's own fabric or leather.

COM plain fabric 54": 6m | 6.6 yards
 COL: 7m | 7.7 yards

Specialty COM, Patterns, velvet or other: Please inquire.

NOTES

This piece can be tailor made to bespoke sizes and finishes, please inquire for further details.

FINISHES VARIATIONS

FBC London products are fabricated to the highest quality. The majority of finishes are made and finished by hand and thus some variation is to be expected. FBC London works closely with our fabricators to assure all the finishes are to our typical high standards and closely align to FBC master references. With finishes of natural material such as wood and stone inherent disparities in colour and grain pattern because of variations caused by nature, over which FBC London has no control. FBC London cannot guarantee exact colour, grain, or texture of wood or stone but will work closely with you as our client to highlight this where necessary.

Creating a natural flow between interior and exterior living the outdoor collection provides our clients the same statement appeal of our trademark designs, known for texture and materiality, now in alternative construction, alfresco ready.

LINE DRAWINGS

