

ADA ARMCHAIR

OUTDOOR COLLECTION

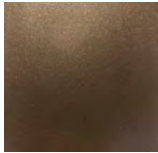


Ada is derived from the ancient Greek name Adalheidis. The lightly textured metal frame provides the stability and strength whilst maintaining a slender elegant appearance allowing the piece to integrate into any indoor or outdoor environment.



ADA ARMCHAIR

FINISH OPTIONS - FRAME



BRONZE FINISH

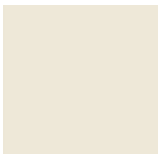


BRUSHED ALUMINIUM

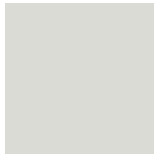


CUSTOM COLOUR

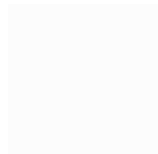
CUSTOM RAL or PANTONE COLOUR



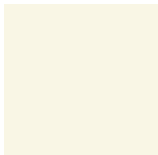
CREAM RAL 9001



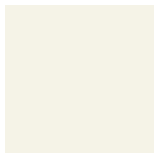
GREY WHITE RAL 9002



SIGNAL WHITE RAL 9003



PEARL WHITE RAL 1013



CREAM WHITE RAL 9010

UPHOLSTERY OPTIONS



COM 1

ALTERNATIVE FINISH COMBINATIONS AVAILABLE, SEE FBC LONDON FINISHES LOOKBOOK FOR REFERENCE OR CONTACT FBC LONDON TO SPECIFY BESPOKE FINISHES FOR YOUR ORDER.

(BESPOKE DESIGN FEE CHARGES MAY BE APPLICABLE)

DIMENSIONS

780mm H x 750mm W x 750mm D x
420mm SH x 600mm SD
30.7in H x 29.5in W x 29.5in D x 16.5in SH x
23.6in SD

FABRIC SPECIFICATIONS

Upholstered items may be ordered using customer's own fabric or leather.

COM plain fabric 54": 4m | 4.5 yards
COL: 5m | 5.5 yards

Specialty COM, Patterns, velvet or other:
Please inquire.

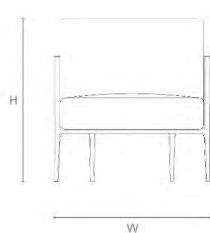
NOTES

This piece can be tailor made to bespoke sizes and finishes, please inquire for further details.

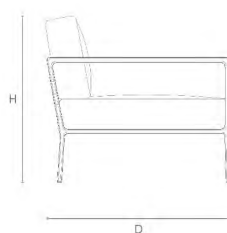
FINISHES VARIATIONS

FBC London products are fabricated to the highest quality. The majority of finishes are made and finished by hand and thus some variation is to be expected. FBC London works closely with our fabricators to assure all the finishes are to our typical high standards and closely align to FBC master references. With finishes of natural material such as wood and stone inherent disparities in colour and grain pattern because of variations caused by nature, over which FBC London has no control. FBC London cannot guarantee exact colour, grain, or texture of wood or stone but will work closely with you as our client to highlight this where necessary.

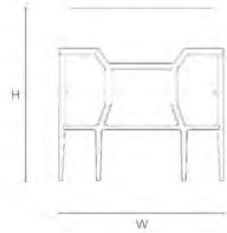
LINE DRAWINGS



Front Elevation



Side Elevation



Plan