

ADA DINING TABLE OUTDOOR COLLECTION

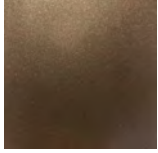


Ada is derived from the ancient Greek name Adalheidis. The lightly textured metal frame provides the stability and strength whilst maintaining a slender elegant appearance allowing the piece to integrate into any indoor or outdoor environment.

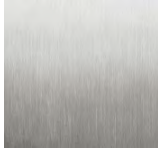


ADA DINING TABLE

FINISH OPTIONS - BASE



BRONZE FINISH

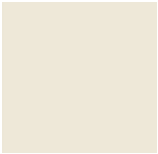


BRUSHED ALUMINIUM

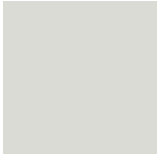


CUSTOM COLOUR

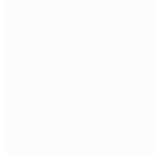
CUSTOM RAL or PANTONE COLOUR



CREAM RAL 9001

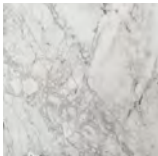


GREY WHITE RAL 2002

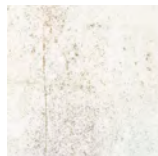


SIGNAL WHITE RAL 9003

FINISH OPTIONS - TOP



DEKTON BERGEN



DEKTON NILIUM



DEKTON REM

DIMENSIONS

Size I

760mm H x 1600mm L x 900mm W
29.9in H x 63in L x 35.4in DW

Size II

760mm H x 2400mm L x 1000mm W
29.9in H x 94.5in L x 39.4in W

Size III

760mm H x 3000mm L x 1000mm W
29.9in H x 118.1in L x 39.4in W

Size IV

760mm H x 3600mm L x 1000mm W
29.9in H x 141.7in L x 39.4in W

NOTES

This piece can be tailor made to bespoke sizes and finishes, please inquire for further details.

FINISHES VARIATIONS

FBC London products are fabricated to the highest quality. The majority of finishes are made and finished by hand and thus some variation is to be expected. FBC London works closely with our fabricators to assure all the finishes are to our typical high standards and closely align to FBC master references. With finishes of natural material such as wood and stone inherent disparities in colour and grain pattern because of variations caused by nature, over which FBC London has no control. FBC London cannot guarantee exact colour, grain, or texture of wood or stone but will work closely with you as our client to highlight this where necessary.

Creating a natural flow between interior and exterior living the outdoor collection provides our clients the same statement appeal of our trademark designs, known for texture and materiality, now in alternative construction, alfresco ready.

LINE DRAWINGS

