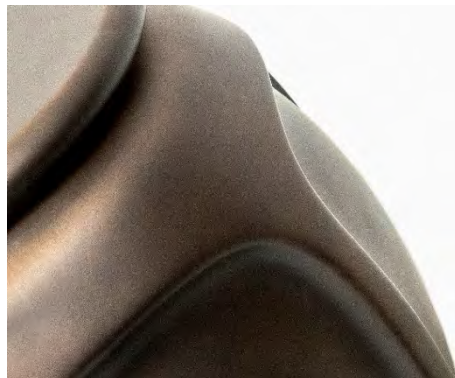
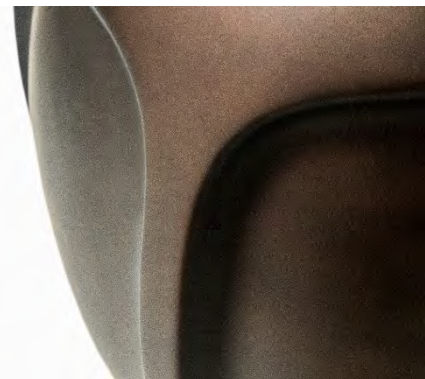


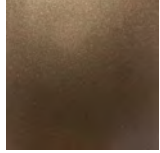
ROMAN I SIDE TABLE
OUTDOOR COLLECTION



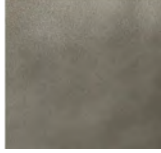
The Roman I/II, moulded from an original hand carved design, available in various finishes. For indoor and outdoor use.



ROMAN I SIDE TABLE



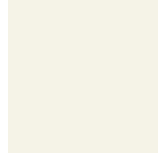
BRONZE FINISH



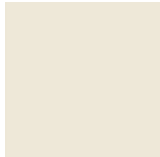
PEWTER



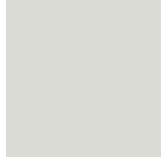
CUSTOM RAL or PANTONE COLOUR



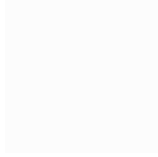
CREAM WHITE RAL 9010



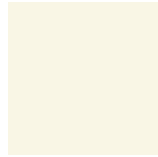
CREAM RAL 9001



GREY WHITE RAL 9002



SIGNAL WHITE RAL 9003



PEARL WHITE RAL 1013

DIMENSIONS

540mm H x 400mm W x 400mm D X 280mm TOP
21.3in H x 15.7in W x 15.7in D x 11in TOP

NOTES

This piece can be tailor made to bespoke sizes and finishes, please inquire for further details.

FINISHES VARIATIONS

FBC London products are fabricated to the highest quality. The majority of finishes are made and finished by hand and thus some variation is to be expected. FBC London works closely with our fabricators to assure all the finishes are to our typical high standards and closely align to FBC master references. With finishes of natural material such as wood and stone inherent disparities in colour and grain pattern because of variations caused by nature, over which FBC London has no control. FBC London cannot guarantee exact colour, grain, or texture of wood or stone but will work closely with you as our client to highlight this where necessary.

ALTERNATIVE FINISH COMBINATIONS AVAILABLE, SEE FBC LONDON FINISHES LOOKBOOK FOR REFERENCE OR CONTACT FBC LONDON TO SPECIFY BESPOKE FINISHES FOR YOUR ORDER.

(BESPOKE DESIGN FEE CHARGES MAY BE APPLICABLE)

Creating a natural flow between interior and exterior living the outdoor collection provides our clients the same statement appeal of our trademark designs, known for texture and materiality, now in alternative construction, alfresco ready.

LINE DRAWINGS

