

LONDON

# ADA CONSOLE



LONDON

# ADA CONSOLE

### DIMENSIONS

820mm H | 1600mm W | 400mm D  
32 1/2" H | 63" W | 15 3/4" D

### DESCRIPTION

Ada is derived from the ancient Greek name Adalheidis. The lightly textured metal frame provides the stability and strength whilst maintaining a slender elegant appearance allowing the piece to integrate into any indoor environment.

### NOTES

This piece can be tailor made to bespoke sizes and finishes, please enquire for further details

### FINISHES

ALTERNATIVE FINISH COMBINATIONS AVAILABLE, SEE FBC LONDON FINISHES LOOKBOOK FOR REFERENCE OR CONTACT FBC LONDON TO SPECIFY BESPOKE FINISHES FOR YOUR ORDER.

### FINISHES VARIATIONS

FBC London products are fabricated to the highest quality. The majority of finishes are made and finished by hand and thus some variation is to be expected. FBC London works closely with our fabricators to assure all the finishes are to our typical high standards and closely align to FBC master references. With finishes of natural material such as wood and stone inherent disparities in colour and grain pattern because of variations caused by nature, over which FBC London has no control. FBC London cannot guarantee exact colour, grain, or texture of wood or stone but will work closely with you as our client to highlight this where necessary.

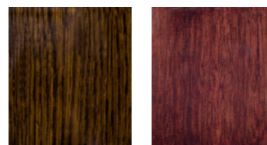
### FINISHES

#### TOP



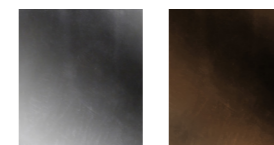
WHITE OAK W.001	FAWN STAINED OAK W.002	STONE GREY OAK W.003	WHITE GREY WALNUT W.004	TAUPE METALLIC OAK W.005	NATURAL WALNUT W.006	MID BROWN OAK W.007	CHOCOLATE BROWN OAK W.008
--------------------	---------------------------	-------------------------	----------------------------	-----------------------------	-------------------------	------------------------	------------------------------

#### HIGH GLOSS



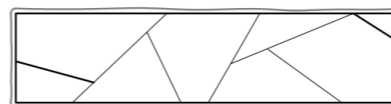
HIGH GLOSS OAK HG.001	HIGH GLOSS WALNUT HG.002
--------------------------	-----------------------------

#### BASE

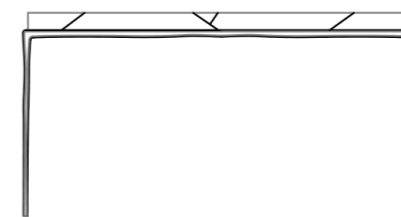


BLACKENED CHROME MT.009	BLACKENED BRONZE MT.010
----------------------------	----------------------------

### LINE DRAWINGS



PLAN



FRONT



SIDE