

ANTIBES CHAISE WITH METAL DETAILING

ANTIBES CHAISE WITH METAL DETAILING

DIMENSIONS

980mm H | 1950mm W | 650mm D | 412mm SH
38 1/2" H | 77" W | 25 1/2" D | 16" SH

DESCRIPTION

Inspired by the relaxed elegance of the South of France. The Antibes is a refined yet inviting luxury chaise, beautifully upholstered and complete with a head rest.

NOTES

This piece can be tailor made to bespoke sizes and finishes, please enquire for further details

FINISHES

ALTERNATIVE FINISH COMBINATIONS AVAILABLE, SEE FBC LONDON FINISHES LOOKBOOK FOR REFERENCE OR CONTACT FBC LONDON TO SPECIFY BESPOKE FINISHES FOR YOUR ORDER.

FINISHES VARIATIONS

FBC London products are fabricated to the highest quality. The majority of finishes are made and finished by hand and thus some variation is to be expected. FBC London works closely with our fabricators to assure all the finishes are to our typical high standards and closely align to FBC master references. With finishes of natural material such as wood and stone inherent disparities in colour and grain pattern because of variations caused by nature, over which FBC London has no control. FBC London cannot guarantee exact colour, grain, or texture of wood or stone but will work closely with you as our client to highlight this where necessary.

FABRIC

Upholstered items may be ordered using customer's own fabric or leather.
COM
COM plain fabric 137cm / 54" in":
Main body: 5m | 5.5 yards
Head rest: 1m | 1 yard
COL
Main body: 80 sq ft
Head rest: 5 sq ft
Speciality COM, Patterns, velvet or other: Please enquire.

FINISHES

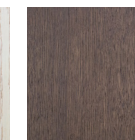
Fabric / Leather

COM

BASE



FAWN STAINED OAK
W.002

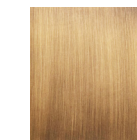


MID BROWN OAK
W.007

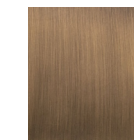


CHOCOLATE BROWN OAK
W.008

DETAIL



BRASS
MT.001



ANTIQUÉ BRASS
MT.002



BRONZED BRASS
MT.003



LINE DRAWINGS



PLAN



FRONT



SIDE