

**DIMENSIONS**

SIZE 1  
450mm H | 1560mm W | 870mm D  
17 3/4" H | 61 1/2" W | 34 1/4" D  
SIZE 2  
450mm H | 1800mm W | 1080mm D  
17 3/4" H | 71" W | 42 1/2" D

**DESCRIPTION**

The Byethorne Coffee table features a silky oak finish with brass legs. The specialist Silky Oak finish is used throughout the Byethorne series and is one of our most admired finishes. Silky oak is a natural timber with smooth rippling waves running throughout.

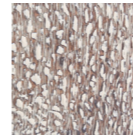
**NOTES**

This piece can be tailor made to bespoke sizes and finishes, please enquire for further details

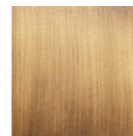
**FINISHES** OPTION 1



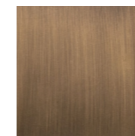
NATURAL SILKY OAK  
S.013  
OPTION 2



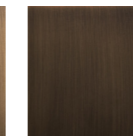
BROWN SILKY OAK  
S0.14  
BASE



BRASS  
MT.001

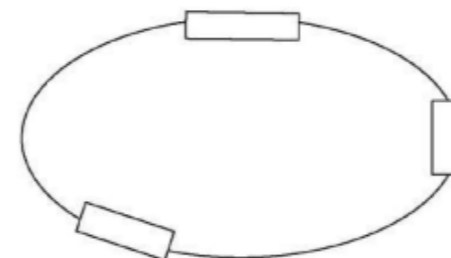


ANTIQUÉ BRASS  
MT.002



BRONZED BRASS  
MT.003

**LINE DRAWINGS**



PLAN



FRONT



SIDE

**FINISHES VARIATIONS**

FBC London products are fabricated to the highest quality. The majority of finishes are made and finished by hand and thus some variation is to be expected. FBC London works closely with our fabricators to assure all the finishes are to our typical high standards and closely align to FBC master references. With finishes of natural material such as wood and stone inherent disparities in colour and grain pattern because of variations caused by nature, over which FBC London has no control. FBC London cannot guarantee exact colour, grain, or texture of wood or stone but will work closely with you as our client to highlight this where necessary.

**FINISHES**

ALTERNATIVE FINISH COMBINATIONS AVAILABLE, SEE FBC LONDON FINISHES LOOKBOOK FOR REFERENCE OR CONTACT FBC LONDON TO SPECIFY BESPOKE FINISHES FOR YOUR ORDER.

