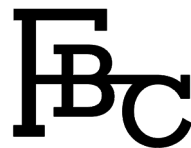


LONDON

BYETHORNE DINING CHAIR



LONDON

BYETHORNE DINING CHAIR

DIMENSIONS

734mm H | 545mm D | 479mm H | 480mm SW
29 "in" H | 21 1/2 "in" D | 19 "in" H | 19 "in" SW

DESCRIPTION

The Byethorne dining chair features, metal legs with the Byethorne handle detail and beautiful, soft upholstery with clean lines.

NOTES

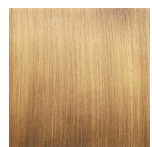
This piece can be tailor made to bespoke sizes and finishes, please enquire for further details

FINISHES

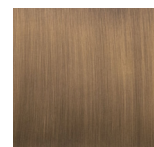
TOP

COM

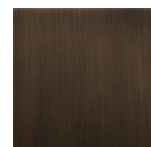
FRAME



BRASS PATINA
MT.006



ANTIQUÉ BRASS
PATINA
MT.007



BRONZED BRASS
PATINA
MT.008

FINISHES VARIATIONS

FBC London products are fabricated to the highest quality. The majority of finishes are made and finished by hand and thus some variation is to be expected. FBC London works closely with our fabricators to assure all the finishes are to our typical high standards and closely align to FBC master references. With finishes of natural material such as wood and stone inherent disparities in colour and grain pattern because of variations caused by nature, over which FBC London has no control. FBC London cannot guarantee exact colour, grain, or texture of wood or stone but will work closely with you as our client to highlight this where necessary.

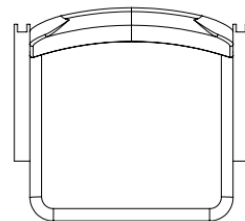
FINISHES

ALTERNATIVE FINISH COMBINATIONS AVAILABLE, SEE FBC LONDON FINISHES LOOKBOOK FOR REFERENCE OR CONTACT FBC LONDON TO SPECIFY BESPOKE FINISHES FOR YOUR ORDER.

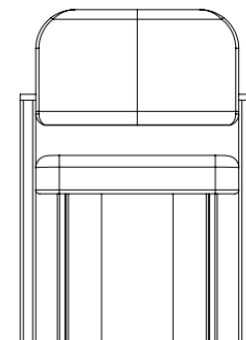
FABRIC

Upholstered items may be ordered using customer's own fabric or leather.
COM plain fabric 137cm / 54" in": 1.5m | 2 yards
COL: 24 sq ft
Specialty COM, Patterns, velvet or other: Please enquire.

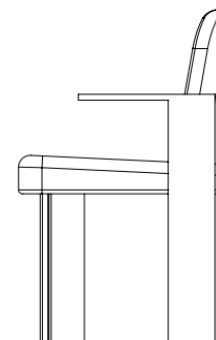
LINE DRAWINGS



PLAN



FRONT



SIDE