

LONDON

BYETHORNE DINING TABLE



LONDON

BYETHORNE DINING TABLE

DIMENSIONS

SIZE 1

760mm H | 2400mm W | 1000mm D
30" in" H | 94 1/2" in" W | 39 1/2" in" D

SIZE 2

760mm H | 3000mm W | 1000mm D
30" in" H | 118" in" W | 39 1/2" in" D

DESCRIPTION

The Byethorne dining table features a silky oak finish with brass details. The specialist Silky Oak finish is used throughout the Byethorne series and is one of our most admired finishes. Silky oak is a natural timber with smooth rippling waves running throughout.

NOTES

This piece can be tailor made to bespoke sizes and finishes, please enquire for further details

FINISHES

TOP



NATURAL SILKY OAK
S.013

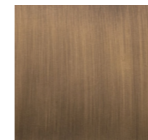


BROWN SILKY OAK
S0.14

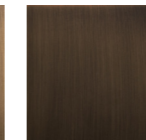
BASE



BRASS
MT.001



ANTIQUÉ BRASS
MT.002



BRONZED BRASS
MT.003

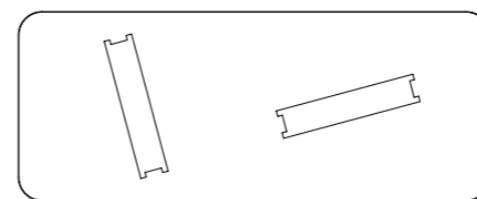
FINISHES VARIATIONS

FBC London products are fabricated to the highest quality. The majority of finishes are made and finished by hand and thus some variation is to be expected. FBC London works closely with our fabricators to assure all the finishes are to our typical high standards and closely align to FBC master references. With finishes of natural material such as wood and stone inherent disparities in colour and grain pattern because of variations caused by nature, over which FBC London has no control. FBC London cannot guarantee exact colour, grain, or texture of wood or stone but will work closely with you as our client to highlight this where necessary.

FINISHES

ALTERNATIVE FINISH COMBINATIONS AVAILABLE, SEE FBC LONDON FINISHES LOOKBOOK FOR REFERENCE OR CONTACT FBC LONDON TO SPECIFY BESPOKE FINISHES FOR YOUR ORDER.

LINE DRAWINGS



PLAN



FRONT

SIDE