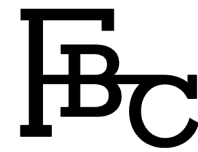


LONDON

BYETHORNE WARDROBE



LONDON

BYETHORNE WARDROBE

DIMENSIONS

2000mm H | 1540mm W | 650mm D
78 3/4" in H | 60 1/2" in W | 25 1/2" in D

DESCRIPTION

Through the popularity of the Byethorne Cabinet, FBC London has created the Byethorne Wardrobe. Made using the textural silky oak finish, a natural timber with concurrent waves throughout with contrasting timber carcass. Coated internally in a bright high gloss lacquer and a met hanging rail running along the top, above storage shelves and pull out drawers.

NOTES

This piece can be tailor made to bespoke sizes and finishes, please enquire for further details

FINISHES

OPTION 1



NATURAL SILKY OAK
S.013

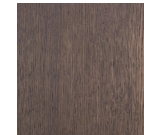


STONE GREY OAK
W.003

OPTION 2



BROWN SILKY OAK
S0.14

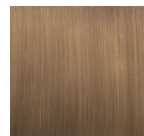


MID BROWN OAK
W.007

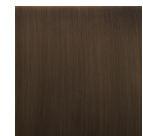
BASE



BRASS
MT.001



ANTIQUÉ BRASS
MT.002



BRONZED BRASS
MT.003

INTERNAL FINISHES



DARK RED
(RAL 3007)
HGL.001



ROMAN GREEN
(RAL 6020)
HGL.003



NIGHT BLUE
(RAL 5011)
HGL.002

FINISHES VARIATIONS

FBC London products are fabricated to the highest quality. The majority of finishes are made and finished by hand and thus some variation is to be expected. FBC London works closely with our fabricators to assure all the finishes are to our typical high standards and closely align to FBC master references. With finishes of natural material such as wood and stone inherent disparities in colour and grain pattern because of variations caused by nature, over which FBC London has no control. FBC London cannot guarantee exact colour, grain, or texture of wood or stone but will work closely with you as our client to highlight this where necessary.

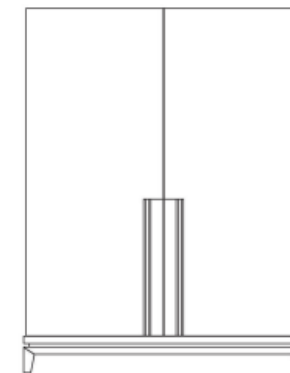
FINISHES

ALTERNATIVE FINISH COMBINATIONS AVAILABLE, SEE FBC LONDON FINISHES LOOKBOOK FOR REFERENCE OR CONTACT FBC LONDON TO SPECIFY BESPOKE FINISHES FOR YOUR ORDER.

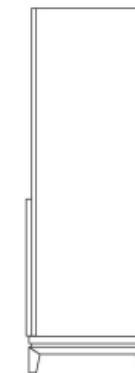
LINE DRAWINGS



PLAN



FRONT



SIDE