



DIMENSIONS

1100mm H | 1000mm W | 525mm D
43 1/4" H | 39 1/2" W | 20 3/4" D

DESCRIPTION

The City range takes inspiration from London's skyscrapers that are reflected in the windows of different buildings around the city and is embodied in the design of the City range. Each chip is individually hand applied. The City chest of drawers features four drawers all on push catch closures, and the beautiful sleek, linear bronze handle front of the drawers.

NOTES

This piece can be tailor made to bespoke sizes and finishes, please enquire for further details

FINISHES

ALTERNATIVE FINISH COMBINATIONS AVAILABLE, SEE FBC LONDON FINISHES LOOKBOOK FOR REFERENCE OR CONTACT FBC LONDON TO SPECIFY BESPOKE FINISHES FOR YOUR ORDER.

FINISHES

OPTION 1



WHITE CHIPPED OAK
S.011

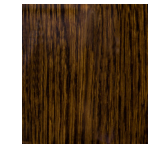


WHITE GREY WALNUT
W.004

OPTION 2



CHOCOLATE CHIPPED OAK
S.012



HIGH GLOSS OAK
HG.001

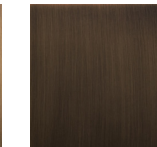
BASE



BRASS
HT.001



ANTIQUÉ BRASS
MT.02



BRONZED BRASS
MT.03

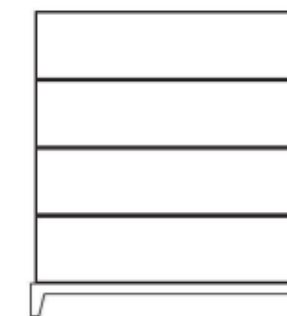
FINISHES VARIATIONS

FBC London products are fabricated to the highest quality. The majority of finishes are made and finished by hand and thus some variation is to be expected. FBC London works closely with our fabricators to assure all the finishes are to our typical high standards and closely align to FBC master references. With finishes of natural material such as wood and stone inherent disparities in colour and grain pattern because of variations caused by nature, over which FBC London has no control. FBC London cannot guarantee exact colour, grain, or texture of wood or stone but will work closely with you as our client to highlight this where necessary.

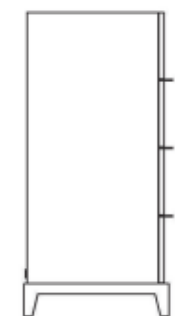
LINE DRAWINGS



PLAN



FRONT



SIDE