



LONDON

### COLUMN DINING TABLE



LONDON

### COLUMN DINING TABLE

#### DIMENSIONS

760mm H | 3000mm W | 1000mm D  
30" in" H | 118" in" W | 39 1/4" in" D

#### DESCRIPTION

The Column range is inspired by the columns from the Roman/Greek temples. This range features the geometric pattern of industrial scale rivets on the columns. These originate from the large rivets commonly seen in the industrial pieces of the era. It is available in bronze or Antique brass finish and the contrast materials of the top in glass adds interest and texture.

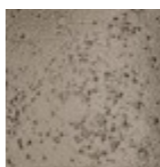
#### NOTES

This piece can be tailor made to bespoke sizes and finishes, please enquire for further details

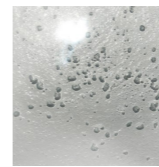
#### FINISHES

ALTERNATIVE FINISH COMBINATIONS AVAILABLE, SEE FBC LONDON FINISHES LOOKBOOK FOR REFERENCE OR CONTACT FBC LONDON TO SPECIFY BESPOKE FINISHES FOR YOUR ORDER.

#### FINISHES TOP

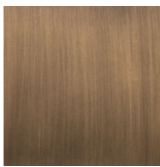


BRONZE SEEDED  
G.002

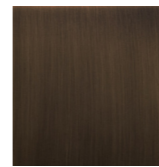


CLEAR SEEDED  
G.003

#### BASE



ANTIQUÉ BRASS  
PATINA  
MT.007

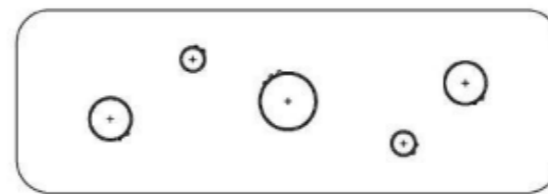


BRONZED BRASS  
PATINA  
MT.008

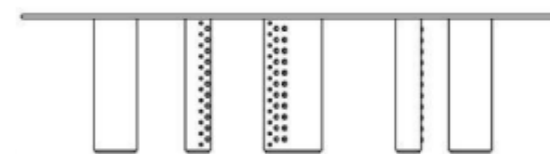
#### FINISHES VARIATIONS

FBC London products are fabricated to the highest quality. The majority of finishes are made and finished by hand and thus some variation is to be expected. FBC London works closely with our fabricators to assure all the finishes are to our typical high standards and closely align to FBC master references. With finishes of natural material such as wood and stone inherent disparities in colour and grain pattern because of variations caused by nature, over which FBC London has no control. FBC London cannot guarantee exact colour, grain, or texture of wood or stone but will work closely with you as our client to highlight this where necessary.

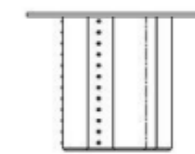
#### LINE DRAWINGS



PLAN



FRONT



SIDE