



LONDON

### EDESIA BENCH WITH ARMS



LONDON

### EDESIA BENCH WITH ARMS

#### DIMENSIONS

820mm H | 1550mm W | 540mm D | 500mm SH | 445mm SD  
32 1/4" H | 59" W | 21 1/4" D | 19 3/4" SH | 17 1/2" SD

#### DESCRIPTION

The Edesia is inspired by the Roman goddess with the same name, goddess of feasting and grand banquets. The smooth curves of the metal frame wraps around the back to hold the beautifully upholstered seat beneath and back rest.

#### NOTES

This piece can be tailor made to bespoke sizes and finishes, please inquire for further details

#### FINISHES

ALTERNATIVE FINISH COMBINATIONS AVAILABLE, SEE FBC LONDON FINISHES LOOKBOOK FOR REFERENCE OR CONTACT FBC LONDON TO SPECIFY BESPOKE FINISHES FOR YOUR ORDER.

#### FINISHES FABRIC/ LEATHER

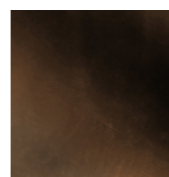


COM/COL 1

#### BASE



BLACKENED CHROME  
MT.009



BLACKENED BRONZE  
MT.010

#### FINISHES VARIATIONS

FBC London products are fabricated to the highest quality. The majority of finishes are made and finished by hand and thus some variation is to be expected. FBC London works closely with our fabricators to assure all the finishes are to our typical high standards and closely align to FBC master references. With finishes of natural material such as wood and stone inherent disparities in colour and grain pattern because of variations caused by nature, over which FBC London has no control. FBC London cannot guarantee exact colour, grain, or texture of wood or stone but will work closely with you as our client to highlight this where necessary.

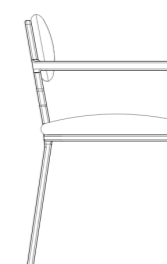
#### FABRIC

Upholstered items may be ordered using customer's own fabric or leather.  
COM plain fabric 137cm/54" in": 2.5m | 3 yards  
COL: 40 sq ft  
Speciality COM, Patterns, velvet or other: Please enquire.

#### LINE DRAWINGS



FRONT



SIDE