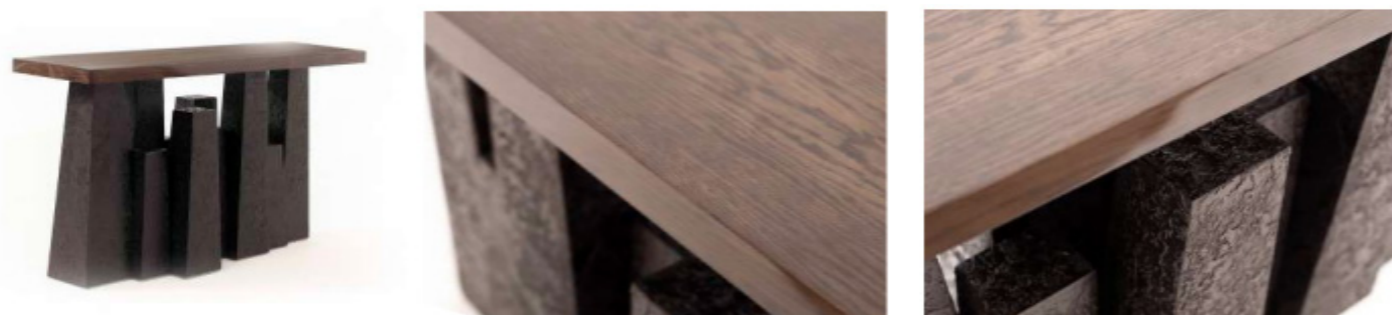




LONDON

### HOUSESTEAD CONSOLE



LONDON

### HOUSESTEAD CONSOLE

#### DIMENSIONS

SIZE 1  
 860mm H | 1400mm W | 400mm D  
 34" in" H | 55" in" W | 15 3/4" in" D

SIZE 2  
 860mm H | 1600mm W | 400mm D  
 33 1/2" in" H | 63" in" W | 15 1/2" in" D

#### DESCRIPTION

The Housesteads console takes inspiration from the ancient Roman Fort, Housesteads, the remains of which can be found along Hadrian's Wall in Northumberland. The specialist textured finish base holds a unique natural beauty supporting the contrasting top. The base of the Housesteads console was designed to evoke the idea of stones rising from the earth, an idea further emphasised through the use of FBC London's specialist Luna finish.

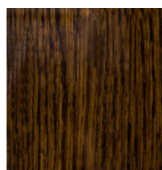
#### NOTES

This piece can be tailor made to bespoke sizes and finishes, please enquire for further details

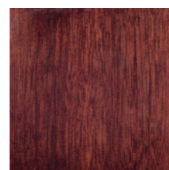
#### FINISHES

ALTERNATIVE FINISH COMBINATIONS AVAILABLE, SEE FBC LONDON FINISHES LOOKBOOK FOR REFERENCE OR CONTACT FBC LONDON TO SPECIFY BESPOKE FINISHES FOR YOUR ORDER.

#### FINISHES TOP

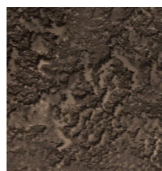


HIGH GLOSS OAK  
HG.001



HIGH GLOSS WALNUT  
HG.002

#### FINISHES BASE

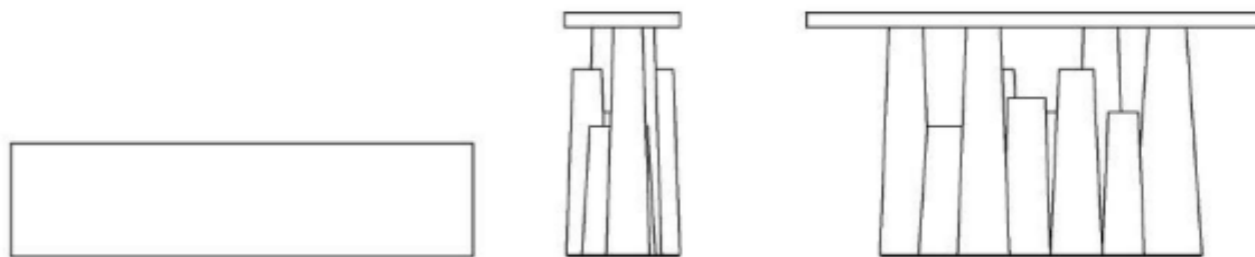


LUNA BRONZE  
S.015



LUNA BLACK  
S.016

#### LINE DRAWINGS



PLAN

FRONT

SIDE

#### FINISHES VARIATIONS

FBC London products are fabricated to the highest quality. The majority of finishes are made and finished by hand and thus some variation is to be expected. FBC London works closely with our fabricators to assure all the finishes are to our typical high standards and closely align to FBC master references. With finishes of natural material such as wood and stone inherent disparities in colour and grain pattern because of variations caused by nature, over which FBC London has no control. FBC London cannot guarantee exact colour, grain, or texture of wood or stone but will work closely with you as our client to highlight this where necessary.