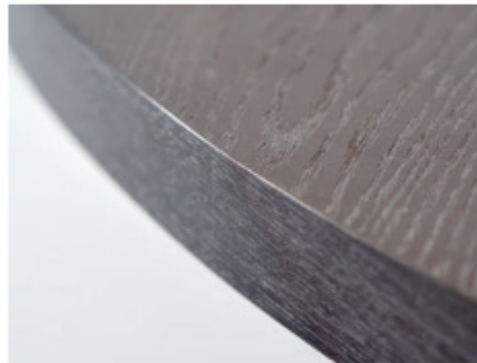


LONDON

### LAWRENCE DINING TABLE



LONDON

### LAWRENCE DINING TABLE

#### DIMENSIONS

##### SIZE 1

760mm H | 1500mm W | 1500mm D

30" in" H | 59" in" W | 59" in" D

##### SIZE 2

760mm H | 2100mm W | 1400mm D

30" in" H | 82 3/4" in" W | 55" in" D

#### DESCRIPTION

The Lawrence Dining Table is inspired by industrial aesthetics of the geometric laser cut steel base combined with a wood veneer top.

#### NOTES

This piece can be tailor made to bespoke sizes and finishes, please enquire for further details

#### FINISHES

ALTERNATIVE FINISH COMBINATIONS AVAILABLE, SEE FBC LONDON FINISHES LOOKBOOK FOR REFERENCE OR CONTACT FBC LONDON TO SPECIFY BESPOKE FINISHES FOR YOUR ORDER.

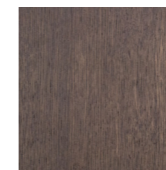
#### FINISHES VARIATIONS

FBC London products are fabricated to the highest quality. The majority of finishes are made and finished by hand and thus some variation is to be expected. FBC London works closely with our fabricators to assure all the finishes are to our typical high standards and closely align to FBC master references. With finishes of natural material such as wood and stone inherent disparities in colour and grain pattern because of variations caused by nature, over which FBC London has no control. FBC London cannot guarantee exact colour, grain, or texture of wood or stone but will work closely with you as our client to highlight this where necessary.

#### FINISHES TOP



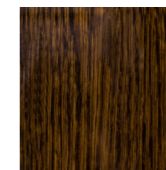
STONE GREY OAK  
W.003



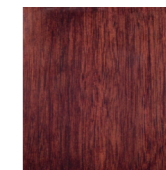
MID BROWN OAK  
W.007



CHOCOLATE  
BROWN OAK  
W.008



HIGH GLOSS OAK  
HG.001

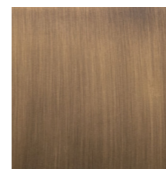


HIGH GLOSS  
WALNUT  
HG.002

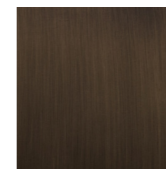
#### BASE



BRASS PATINA  
MT.006



ANTIQUÉ BRASS  
PATINA  
MT.007



BRONZED BRASS  
PATINA  
MT.008



BRUSHED  
ALUMINIUM  
SO.028

#### LINE DRAWINGS

