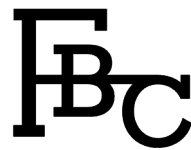




LONDON

LUCA CHAIR



LONDON

LUCA CHAIR

DIMENSIONS

900mm H | 645mm W | 660mm D | 480mm SH | 500mm SD | 665mm AH
35 1/4" H | 25 1/4" W | 26" D | 19" SH | 19 3/4" SD | 25 3/4" SD

DESCRIPTION

The Luca Chair features our distinct Armour pattern on the back of the seat, which contrasts with the high gloss legs and upholstery. Attention to detail shown through the defined seams and joints as the Luca Chair, featuring high gloss oak legs and textured bronze detail plate to the back.

NOTES

This piece can be tailor made to bespoke sizes and finishes, please inquire for further details

FINISHES

ALTERNATIVE FINISH COMBINATIONS AVAILABLE, SEE FBC LONDON FINISHES LOOKBOOK FOR REFERENCE OR CONTACT FBC LONDON TO SPECIFY BESPOKE FINISHES FOR YOUR ORDER.

FINISHES VARIATIONS

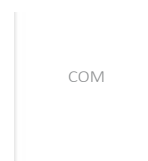
FBC London products are fabricated to the highest quality. The majority of finishes are made and finished by hand and thus some variation is to be expected. FBC London works closely with our fabricators to assure all the finishes are to our typical high standards and closely align to FBC master references. With finishes of natural material such as wood and stone inherent disparities in colour and grain pattern because of variations caused by nature, over which FBC London has no control. FBC London cannot guarantee exact colour, grain, or texture of wood or stone but will work closely with you as our client to highlight this where necessary.

FABRIC

Upholstered items may be ordered using customer's own fabric or leather.
COM plain fabric 137cm/54" in": 2m | 2.5 yards
COL: 32 sq ft
Speciality COM, Patterns, velvet or other: Please enquire.

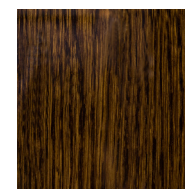
FINISHES

FABRIC/LEATHER

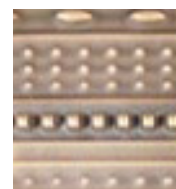


COM 1/COL 1

BASE



HIGH GLOSS OAK
HG.001



ARMOUR S
BRASS
S.023

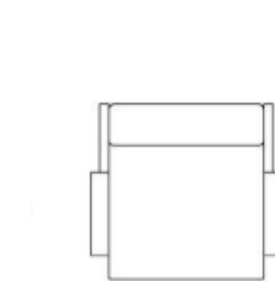


ARMOUR S
ANTIQUÉ BRASS
S.024

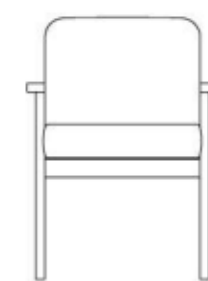


ARMOUR S
BRONZED BRASS
S.025

LINE DRAWINGS



PLAN



FRONT



SIDE