



DIMENSIONS

800mm H | 825mm W | 825mm D | 420SH | 563mm SD | 600mm AH
31 1/4" H | 32 1/4" W | 32 1/4" W | 16 1/4" SH

DESCRIPTION

Inspired by Mount Etna, the Montis Armchair evokes the raw power of nature. The contrasting tones presented through the highly polished rich copper fins to the internal oxidised finish. The back detail almost touches, but not quite, holding the fullbodied upholstery designed to envelope comfort.

NOTES

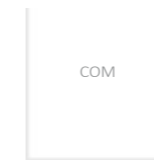
This piece can be tailor made to bespoke sizes and finishes, please enquire for further details

FINISHES

ALTERNATIVE FINISH COMBINATIONS AVAILABLE, SEE FBC LONDON FINISHES LOOKBOOK FOR REFERENCE OR CONTACT FBC LONDON TO SPECIFY BESPOKE FINISHES FOR YOUR ORDER.

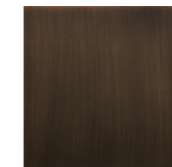
FINISHES

BODY

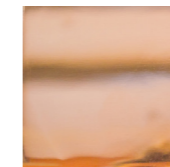


COM 1/COL 1

BASE



BRONZED BRASS
MT.003



POLISHED COPPER
MT.004

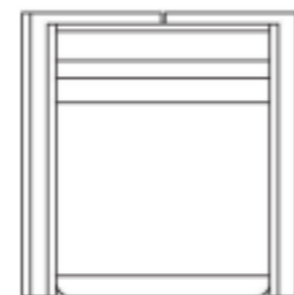
FINISHES VARIATIONS

FBC London products are fabricated to the highest quality. The majority of finishes are made and finished by hand and thus some variation is to be expected. FBC London works closely with our fabricators to assure all the finishes are to our typical high standards and closely align to FBC master references. With finishes of natural material such as wood and stone inherent disparities in colour and grain pattern because of variations caused by nature, over which FBC London has no control. FBC London cannot guarantee exact colour, grain, or texture of wood or stone but will work closely with you as our client to highlight this where necessary.

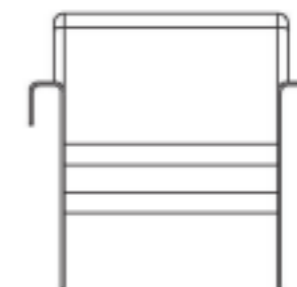
FABRIC

Upholstered items may be ordered using customer's own fabric or leather.
COM plain fabric 137cm/54" : 3.5m | 4 yds
COL: 56 sq ft
Speciality COM, Patterns, velvet or other: Please enquire.

LINE DRAWINGS



PLAN



FRONT



SIDE