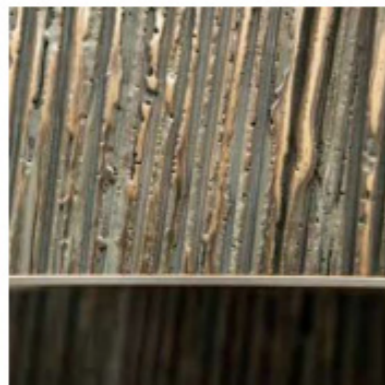
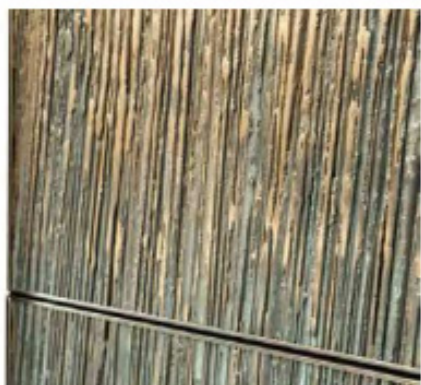




LONDON

RAIN BEDSIDE TABLE



LONDON

RAIN BEDSIDE TABLE

DIMENSIONS

SIZE 1 | TWO DRAWERS
500mm H | 600mm W | 525mm D
19 1/2" H | 23 1/2" W | 20 3/4" D
SIZE 2 | THREE DRAWERS
750mm H | 800mm W | 525mm D
29 1/2" H | 31 1/2" W | 20 3/4" D

DESCRIPTION

The Rain texture is a 3d mould that embodies falling Rain, it is available in Ombre Bronze and Verdigris Bronze. This heavily textured finish is complimented by a smooth matt oak veneer and a metal base.

NOTES

This piece can be tailor made to bespoke sizes and finishes, please enquire for further details

FINISHES

ALTERNATIVE FINISH COMBINATIONS AVAILABLE, SEE FBC LONDON FINISHES LOOKBOOK FOR REFERENCE OR CONTACT FBC LONDON TO SPECIFY BESPOKE FINISHES FOR YOUR ORDER.

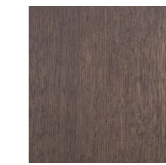
FINISHES VARIATIONS

FBC London products are fabricated to the highest quality. The majority of finishes are made and finished by hand and thus some variation is to be expected. FBC London works closely with our fabricators to assure all the finishes are to our typical high standards and closely align to FBC master references. With finishes of natural material such as wood and stone inherent disparities in colour and grain pattern because of variations caused by nature, over which FBC London has no control. FBC London cannot guarantee exact colour, grain, or texture of wood or stone but will work closely with you as our client to highlight this where necessary.

FINISHES

OPTION 1

OPTION 2



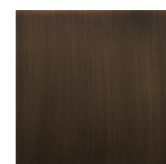
RAIN VERDIGRIS S.004

STONE GREY OAK W.003

RAIN OMBRE BRONZE S.005

MID BROWN OAK W.005

BASE



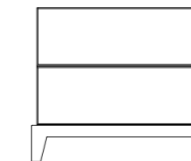
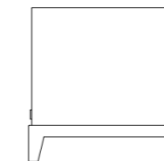
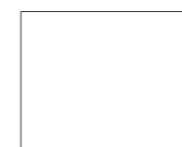
BRASS MT.001

ANTIQUÉ BRASS MT.002

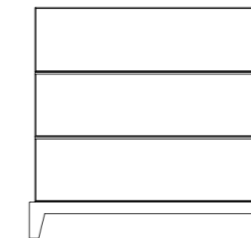
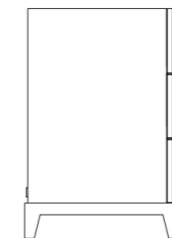
BRONZED BRASS MT.003

LINE DRAWINGS

Size 1



Size 2



PLAN

FRONT

SIDE