



LONDON

SOL ARMCHAIR



LONDON

SOL ARMCHAIR

DIMENSIONS

780mm H | 750mm W | 850mm D | 420mm SH | 612mm SD | 600mm AH
30 1/4" H | 29 1/2" W | 33 1/2" D | 16 1/2" SH | 24" SH | 23 3/4" AH

DESCRIPTION

The original Sol chair is the epitome of a design classic. The Chair was originally designed as a modern interpretation of the traditional club chair. With a bronze or aluminium base and strong geometric form is complimented by clean lines of the upholstered body.

NOTES

This piece can be tailor made to bespoke sizes and finishes, please enquire for further details

FINISHES

ALTERNATIVE FINISH COMBINATIONS AVAILABLE, SEE FBC LONDON FINISHES LOOKBOOK FOR REFERENCE OR CONTACT FBC LONDON TO SPECIFY BESPOKE FINISHES FOR YOUR ORDER.

FINISHES VARIATIONS

FBC London products are fabricated to the highest quality. The majority of finishes are made and finished by hand and thus some variation is to be expected. FBC London works closely with our fabricators to assure all the finishes are to our typical high standards and closely align to FBC master references. With finishes of natural material such as wood and stone inherent disparities in colour and grain pattern because of variations caused by nature, over which FBC London has no control. FBC London cannot guarantee exact colour, grain, or texture of wood or stone but will work closely with you as our client to highlight this where necessary.

FABRIC

Upholstered items may be ordered using customer's own fabric or leather.
COM plain fabric 137cm/54" : 3.5m | 4.5 yards
COL: 56 sq ft
Speciality COM, Patterns, velvet or other: Please enquire

FINISHES FABRIC/LEATHER

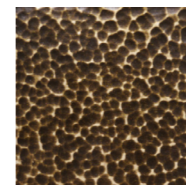


COM 1/COL 1

BASE

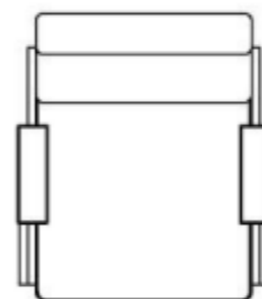


PLANISHED ALUMINIUM MT.013

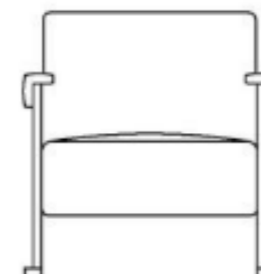


PLANISHED BRONZE MT.014

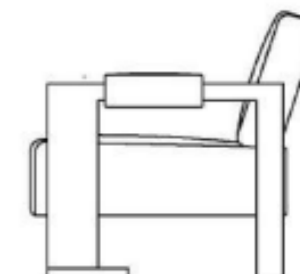
LINE DRAWINGS



PLAN



FRONT



SIDE