

LONDON

SOL COFFEE TABLE



LONDON

SOL COFFEE TABLE

DIMENSIONS

400mm H | 1600mm W | 950mm D
15 3/4" H | 63 "in" W | 37 1/2" D

DESCRIPTION

The Sol coffee table is an extension of the Sol range. Characterised by the textured planished metal base in either bronze or aluminium contrasted with a wood or glass top.

NOTES

This piece can be tailor made to bespoke sizes and finishes, please enquire for further details

FINISHES

ALTERNATIVE FINISH COMBINATIONS AVAILABLE, SEE FBC LONDON FINISHES LOOKBOOK FOR REFERENCE OR CONTACT FBC LONDON TO SPECIFY BESPOKE FINISHES FOR YOUR ORDER.

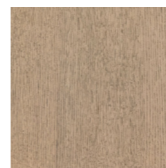
FINISHES VARIATIONS

FBC London products are fabricated to the highest quality. The majority of finishes are made and finished by hand and thus some variation is to be expected. FBC London works closely with our fabricators to assure all the finishes are to our typical high standards and closely align to FBC master references. With finishes of natural material such as wood and stone inherent disparities in colour and grain pattern because of variations caused by nature, over which FBC London has no control. FBC London cannot guarantee exact colour, grain, or texture of wood or stone but will work closely with you as our client to highlight this where necessary.

FINISHES TOP



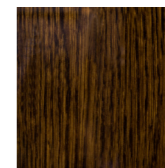
FAWN STAINED OAK W.002



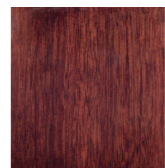
STONE GREY OAK W.003



CHOCOLATE BROWN OAK W.008



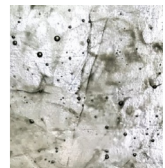
HIGH GLOSS OAK HG.001



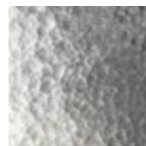
HIGH GLOSS WALNUT HG.002



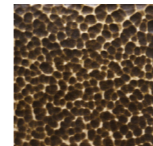
BRONZE RECYCLED G.004



CLEAR RECYCLED G.005

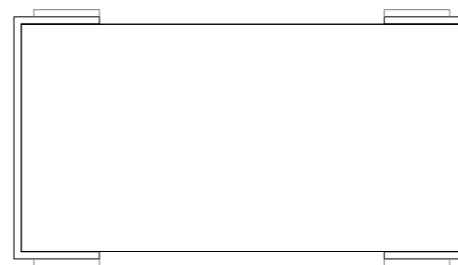


PLINISHED ALUMINIUM MT.013

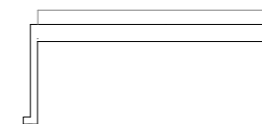


PLINISHED BRONZE MT.014

LINE DRAWINGS



PLAN



FRONT



SIDE