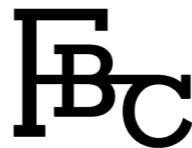


LONDON

SOL SOFA



LONDON

SOL SOFA

DIMENSIONS

Size I – two seaters

780mm H | 1600mm W | 850mm D | 420mm SH | 612mm SD | 600mm AH
30.7in H | 63in W | 33.5in D | 16.5in SH | 24.1in SD | 23.6in AH

Size II – three seaters

780mm H | 2400mm W | 850mm D | 420mm SH | 612mm SD | 600mm AH
30.7in H | 94.5in W | 33.5in D | 16.5in SH | 24.1in SD | 23.6in AH

DESCRIPTION

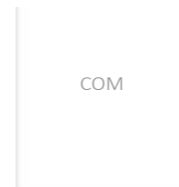
The original Sol sofa is the epitome of a design classic. The Chair was originally designed as a modern interpretation of the traditional club chair. With a bronze or aluminium base and strong geometric form is complimented by clean lines of the upholstered body.

NOTES

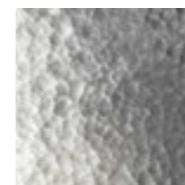
This piece can be tailor made to bespoke sizes and finishes, please enquire for further details

FINISHES

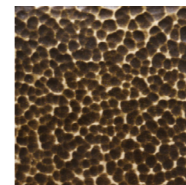
FABRIC/LEATHER



BASE



PLANISHED ALUMINIUM MT.013



PLANISHED BRONZE MT.014

FINISHES VARIATIONS

FBC London products are fabricated to the highest quality. The majority of finishes are made and finished by hand and thus some variation is to be expected. FBC London works closely with our fabricators to assure all the finishes are to our typical high standards and closely align to FBC master references. With finishes of natural material such as wood and stone inherent disparities in colour and grain pattern because of variations caused by nature, over which FBC London has no control. FBC London cannot guarantee exact colour, grain, or texture of wood or stone but will work closely with you as our client to highlight this where necessary.

FABRIC

Upholstered items may be ordered using customer's own fabric or leather. Speciality COM, Patterns, velvet or other: Please enquire

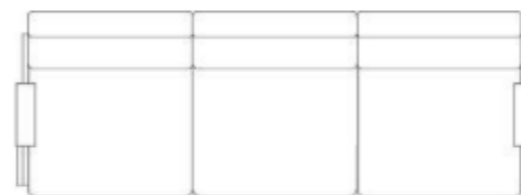
SIZE 2 | THREE SEATER

COM plain fabric 137cm/54" in": 9m | 10 yards
COL: 145 sq ft

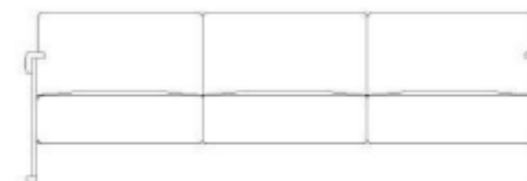
FINISHES

ALTERNATIVE FINISH COMBINATIONS AVAILABLE, SEE FBC LONDON FINISHES LOOKBOOK FOR REFERENCE OR CONTACT FBC LONDON TO SPECIFY BESPOKE FINISHES FOR YOUR ORDER.

LINE DRAWINGS



PLAN



FRONT



SIDE