

EDESIA CARVER CHAIR OUTDOOR



EDESIA CARVER CHAIR OUTDOOR

**DIMENSIONS**

820mm H | 600mm W | 540mm D | 500mm SH | 445mm SD | 670mm AH  
32 1/4" H | 23 1/2" W | 21 1/4" D | 19 3/4" SH | 17 1/2" SD | 26 1/2" AH

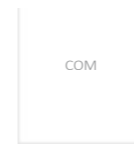
**DESCRIPTION**

The Edesia is inspired by the Roman goddess with the same name, goddess of feasting and grand banquets. The smooth curves of the metal frame wraps around the back to hold the beautifully upholstered seat beneath and back rest.

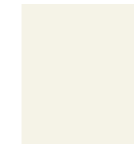
**NOTES**

This piece can be tailor made to bespoke sizes and finishes, please enquire for further details

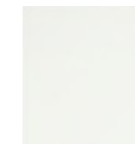
**FINISHES FABRIC**



**BASE**



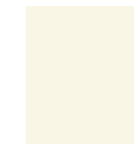
CREAM WHITE  
RAL 9001  
OR.002



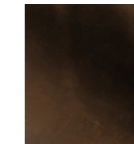
GREY WHITE  
RAL 9002  
OR.003



SIGNAL WHITE  
RAL 9003  
OR.004



PEARL WHITE  
RAL 1013  
OR.005



BLACKENED  
BRONZE  
MT.010 (EDESIA)



BRUSHED  
ALUMINIUM  
MT.011

**FINISHES VARIATIONS**

FBC London products are fabricated to the highest quality. The majority of finishes are made and finished by hand and thus some variation is to be expected. FBC London works closely with our fabricators to assure all the finishes are to our typical high standards and closely align to FBC master references. With finishes of natural material such as wood and stone inherent disparities in colour and grain pattern because of variations caused by nature, over which FBC London has no control. FBC London cannot guarantee exact colour, grain, or texture of wood or stone but will work closely with you as our client to highlight this where necessary.

**FABRIC**

Upholstered items may be ordered using customer's own fabric.  
COM plain fabric 137cm/54" in": 1m | 1.5 yards  
Speciality COM, Patterns, velvet or other: Please enquire.

**LINE DRAWINGS**



PLAN



FRONT



SIDE