

DIMENSIONS

820mm H | 540mm W | 540mm D | 500mm SH | 445mm SD
32 1/4" H | 21 1/4" W | 21 1/4" D | 19 3/4" SH | 17 1/2" SD

DESCRIPTION

The Edesia is inspired by the Roman goddess with the same name, goddess of feasting and grand banquets. The smooth curves of the metal frame wraps around the back to hold the beautifully upholstered seat beneath and back rest.

NOTES

This piece can be tailor made to bespoke sizes and finishes, please enquire for further details

FINISHES

ALTERNATIVE FINISH COMBINATIONS AVAILABLE, SEE FBC LONDON FINISHES LOOKBOOK FOR REFERENCE OR CONTACT FBC LONDON TO SPECIFY BESPOKE FINISHES FOR YOUR ORDER.

FINISHES VARIATIONS

FBC London products are fabricated to the highest quality. The majority of finishes are made and finished by hand and thus some variation is to be expected. FBC London works closely with our fabricators to assure all the finishes are to our typical high standards and closely align to FBC master references. With finishes of natural material such as wood and stone inherent disparities in colour and grain pattern because of variations caused by nature, over which FBC London has no control. FBC London cannot guarantee exact colour, grain, or texture of wood or stone but will work closely with you as our client to highlight this where necessary.

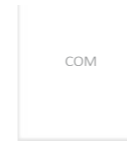
FABRIC

Upholstered items may be ordered using customer's own fabric. COM plain fabric 137cm/54" in": 1m | 1.5 yards
Speciality COM, Patterns, velvet or other: Please enquire.

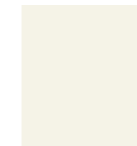


FINISHES

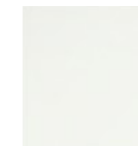
FABRIC



BASE



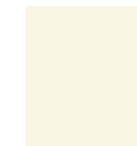
CREAM WHITE
RAL 9001
OR.002



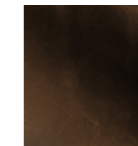
GREY WHITE
RAL 9002
OR.003



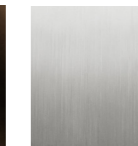
SIGNAL WHITE
RAL 9003
OR.004



PEARL WHITE
RAL 1013
OR.005



BLACKENED
BRONZE
MT.010 (EDESIA)



BRUSHED
ALUMINIUM
MT.011



LINE DRAWINGS



PLAN



FRONT



SIDE