

DIMENSIONS

400mm H | 1600mm W | 950mm D
15 3/4" H | 63 "in" W | 37 1/2" D

DESCRIPTION

The Sol console table is part of the Sol family of products. The epitome of a design classic in furniture terms, named after Fiona's husband. With a formed aluminium base finished in bronze, aluminium or powder coated to any RAL colour. The strong geometric lines is contrasted with a faux stone top.

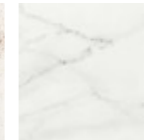
NOTES

This piece can be tailor made to bespoke sizes and finishes, please enquire for further details

FINISHES TOP



NILIUM
D.001

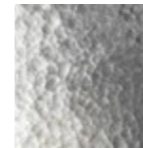


REM NATURAL
D.002

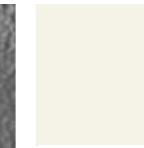


BERGEN STONIKA
D.003

BASE



PLANISHED
ALUMINIUM
MT.013



CREAM WHITE
RAL 9001
OR.002



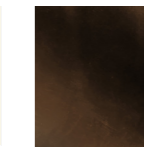
GREY WHITE
RAL 9002
OR.003



SIGNAL WHITE
RAL 9003
OR.004



PEARL WHITE
RAL 1013
OR.005



BRONZE
POWDER COATED
MT.016

FINISHES VARIATIONS

FBC London products are fabricated to the highest quality. The majority of finishes are made and finished by hand and thus some variation is to be expected. FBC London works closely with our fabricators to assure all the finishes are to our typical high standards and closely align to FBC master references. With finishes of natural material such as wood and stone inherent disparities in colour and grain pattern because of variations caused by nature, over which FBC London has no control. FBC London cannot guarantee exact colour, grain, or texture of wood or stone but will work closely with you as our client to highlight this where necessary.



LINE DRAWINGS



PLAN



FRONT



SIDE