

**DIMENSIONS**

450mm H | 1700mm W | 2060mm D  
17 1/2" H | 66 1/2" W | 81" D

**DESCRIPTION**

The Sol lounge is a wonder addition to the Sol family of products. The epitome of a design classic in furniture terms, named after Fiona's husband. With a formed aluminium base finish, or powder coated to any RAL colour. The strong geometric lines and main upholstered body has been made to maximise the comfort, and the wheels allow this striking piece to be very mobile around a pool or a garden area.

**NOTES**

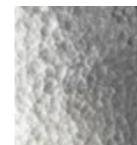
This piece can be tailor made to bespoke sizes and finishes, please enquire for further details

**FINISHES** FABRIC

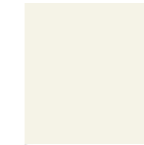


COM 1

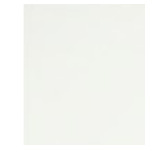
**BASE**



PLINISHED ALUMINIUM  
MT.013



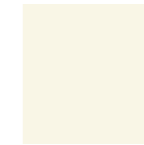
CREAM WHITE  
RAL 9001  
OR.002



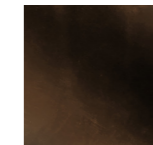
GREY WHITE  
RAL 9002  
OR.003



SIGNAL WHITE  
RAL 9003  
OR.004



PEARL WHITE  
RAL 1013  
OR.005



BRONZE POWDER COATED  
MT.016

**FINISHES VARIATIONS**

FBC London products are fabricated to the highest quality. The majority of finishes are made and finished by hand and thus some variation is to be expected. FBC London works closely with our fabricators to assure all the finishes are to our typical high standards and closely align to FBC master references. With finishes of natural material such as wood and stone inherent disparities in colour and grain pattern because of variations caused by nature, over which FBC London has no control. FBC London cannot guarantee exact colour, grain, or texture of wood or stone but will work closely with you as our client to highlight this where necessary.

**FABRIC**

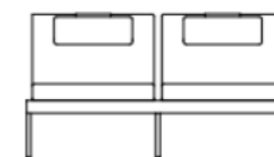
Upholstered items may be ordered using customer's own fabric.  
COM plain fabric 137cm/54" in": 10m | 11 yards  
Speciality COM, Patterns, velvet or other: Please enquire.



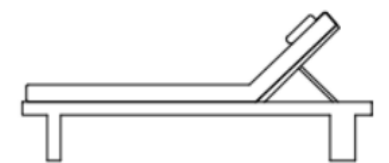
**LINE DRAWINGS**



PLAN



FRONT



SIDE