



LONDON

BRIDGE BENCH



LONDON

BRIDGE BENCH

DIMENSIONS

SIZE I

1600mm W x 450mm D x 450mm H

63in W x 17.7in D x 17.7in H

SIZE II

1800mm W x 450mm D x 450mm H

70.9in W x 17.7in D x 17.7in H

DESCRIPTION

Our latest addition to the popular Bridge Range, the Bridge Bench boasts the same, streamlined design. Inspired by the two bridges which link the two cities, Newcastle and London together. This beautifully structured bench supports the modern-brutalist design philosophy with its inspiration coming from the two bridges. The Bridge Bench also represents the London cityscape skyline, detailed along the base.

FINISHES VARIATIONS

FBC London products are fabricated to the highest quality. The majority of finishes are made and finished by hand and thus some variation is to be expected. FBC London works closely with our fabricators to assure all the finishes are to our typical high standards and closely align to FBC master references. With finishes of natural material such as wood and stone inherent disparities in colour and grain pattern because of variations caused by nature, over which FBC London has no control. FBC London cannot guarantee exact colour, grain, or texture of wood or stone but will work closely with you as our client to highlight this where necessary.

FINISHES

ALTERNATIVE FINISH COMBINATIONS AVAILABLE, SEE FBC LONDON FINISHES LOOKBOOK FOR REFERENCE OR CONTACT FBC LONDON TO SPECIFY BESPOKE FINISHES FOR YOUR ORDER.

NOTES

This piece can be tailor made to bespoke sizes and finishes, please enquire for further details

FINISHES

TOP MATT FINISH



WHITE OAK
W.001



FAWN STAINED
OAK
W.002



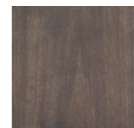
STONE GREY
OAK
W.003



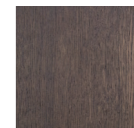
WHITE GREY
WALNUT
W.004



TAUPE
METALLIC OAK
W.005



NATURAL
WALNUT
W.006



MID BROWN
OAK
W.007

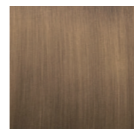


CHOCOLATE
BROWN OAK
W.008

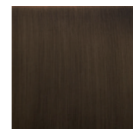
BASE



BRASS
MT.001



ANTIQUÉ BRASS
MT.002



BRONZED BRASS
MT.003

LINE DRAWINGS