



LONDON

BYETHORNE SIDE TABLES



LONDON

BYETHORNE SIDE TABLES

DIMENSIONS

SIZE 1  
400mm DIA | 480mm H  
16 "in" DIA | 19 "in" H  
SIZE 2  
400mm DIA | 580mm H  
16 "in" DIA | 23 "in" H

DESCRIPTION

The Byethorne side tables has a textured with a silky oak top, complete with elegantly streamlined brass base and handles. The specialist silky oak finish is used throughout the Byethorne series and is one of our most admired finishes. Silky oak is a natural timber with smooth rippling waves running throughout. A white wash is added over the top in order to create warming tones and soft textures. Finished by sanding back and exposing the natural waves of the wood with white pockets along the base

FINISHES VARIATIONS

FBC London products are fabricated to the highest quality. The majority of finishes are made and finished by hand and thus some variation is to be expected. FBC London works closely with our fabricators to assure all the finishes are to our typical high standards and closely align to FBC master references. With finishes of natural material such as wood and stone inherent disparities in colour and grain pattern because of variations caused by nature, over which FBC London has no control. FBC London cannot guarantee exact colour, grain, or texture of wood or stone but will work closely with you as our client to highlight this where necessary.

FINISHES

ALTERNATIVE FINISH COMBINATIONS AVAILABLE, SEE FBC LONDON FINISHES LOOKBOOK FOR REFERENCE OR CONTACT FBC LONDON TO SPECIFY BESPOKE FINISHES FOR YOUR ORDER.

NOTES

This piece can be tailor made to bespoke sizes and finishes, please enquire for further details

FINISHES TOP



NATURAL SILKY OAK S.013

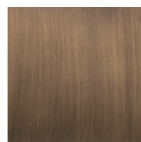


BROWN SILKY OAK S0.14

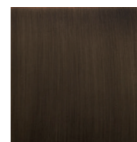
BASE



BRASS MT.001



ANTIQUÉ BRASS MT.002



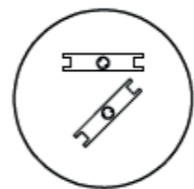
BRONZED BRASS MT.003



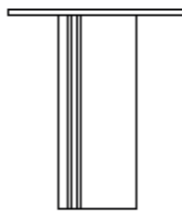
LINE DRAWINGS

SIZE 1

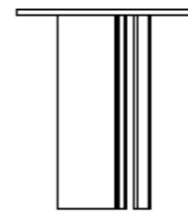
SIZE 2



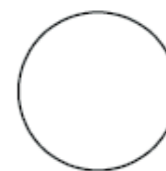
PLAN



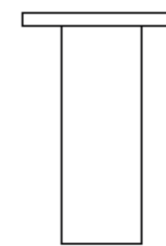
FRONT



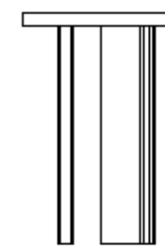
SIDE



PLAN



FRONT



SIDE