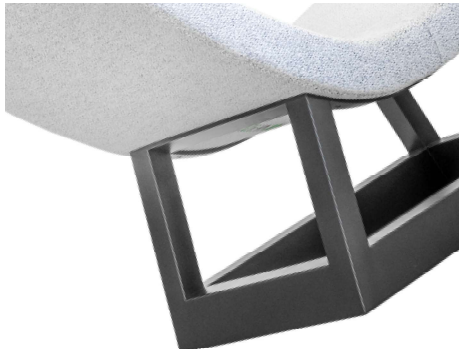


OUTDOOR ANTIBES CHAISE



Inspired by the relaxed elegance of the South of France.
The Antibes is a refined yet inviting luxury chaise, beautifully upholstered and complete with a head rest. Developed for outdoor use.



OUTDOOR ANTIBES CHAISE VARIATIONS

VARIATION I



BRONZE POWDER
COATED
ALUMINIUM BASE



COM 1



COM 2

ALTERNATIVE FINISH COMBINATIONS AVAILABLE, SEE FBC LONDON FINISHES LOOKBOOK FOR REFERENCE OR CONTACT FBC LONDON TO SPECIFY BESPOKE FINISHES FOR YOUR ORDER.
(BESPOKE DESIGN FEE CHARGES MAY BE APPLICABLE)

DIMENSIONS

980mm H x 1950mm W x 650mm D
38.58in H x 76.77in W x 25.59in D

FABRIC SPECIFICATIONS

PLAIN FABRIC

COM 1: MAIN BODY: 5m | 5.5 yds

COM 2: HEAD REST: 1m | 1.1 yds

PATTERN/ VELVET/ LEATHER

COM 1: MAIN BODY: 6m | 6.6 yds | 65 sq ft

COM 2: HEAD REST: 1m | 1.1 yds | 11 sq ft

UPHOLSTERY: COM

Upholstered items may be ordered using customer's own fabric or leather (COM).

LEAD TIME & SHIPPING

12 - 14 weeks + shipping. Shipping costs quoted upon confirmation of delivery address.

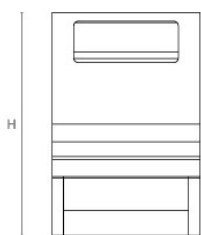
NOTES

This piece can be tailor made to bespoke sizes and finishes, please enquire for further details.

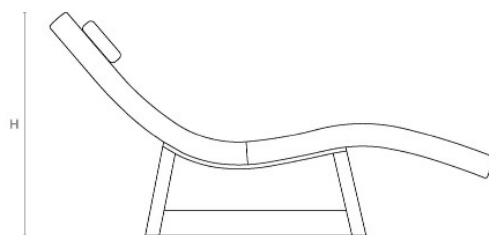
FINISHES VARIATIONS

FBC London products are fabricated to the highest quality. The majority of finishes are made and finished by hand and thus some variation is to be expected. FBC London works closely with our fabricators to assure all the finishes are to our typical high standards and closely align to FBC master references. With finishes of natural material such as wood and stone inherent disparities in colour and grain pattern because of variations caused by nature, over which FBC London has no control. FBC London cannot guarantee exact colour, grain, or texture of wood or stone but will work closely with you as our client to highlight this where necessary

LINE DRAWINGS



Front Elevation



Side Elevation



Plan