

OSWALD SIDE TABLE



The 'Oswald' Side Table evokes the subtle curves and contours inspired by the imagery of a Roman Shield. This side table features a juxtaposition between the curve of the cast bronze legs and the strong geometry from the brass detailing set within the timber top.



OSWALD SIDE TABLE VARIATIONS

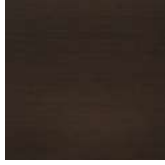
VARIATION I



FAWN-STAINED
OAK TOP



CAST BRONZE
BASE



BRONZE FINISH
DETAILS

VARIATION II



MID-BROWN
OAK TOP



CAST BRONZE
BASE



BRASS FINISH
DETAILS

VARIATION III



CHOCOLATE-
BROWN OAK
TOP



CAST BRONZE
BASE



BRASS FINISH
DETAILS

ALTERNATIVE FINISH COMBINATIONS AVAILABLE, SEE FBC LONDON FINISHES LOOKBOOK FOR REFERENCE
OR CONTACT FBC LONDON TO SPECIFY BESPOKE FINISHES FOR YOUR ORDER.
(BESPOKE DESIGN FEE CHARGES MAY BE APPLICABLE)

DIMENSIONS

510mm H x 450mm D
20.08in H x x 17.69in D

LEAD TIME & SHIPPING

12- 14 weeks + shipping. Shipping costs quoted upon confirmation of delivery address.

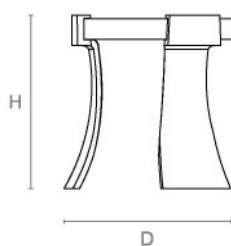
NOTES

This piece can be tailor made to bespoke sizes and finishes, please enquire for further details.

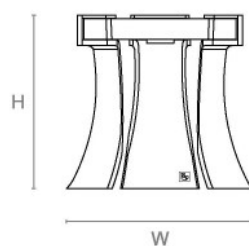
FINISHES VARIATIONS

FBC London products are fabricated to the highest quality. The majority of finishes are made and finished by hand and thus some variation is to be expected. FBC London works closely with our fabricators to assure all the finishes are to our typical high standards and closely align to FBC master references. With finishes of natural material such as wood and stone inherent disparities in colour and grain pattern because of variations caused by nature, over which FBC London has no control. FBC London cannot guarantee exact colour, grain, or texture of wood or stone but will work closely with you as our client to highlight this where necessary

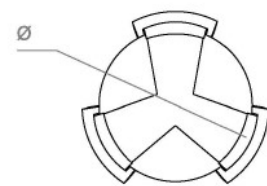
LINE DRAWINGS



Side Elevation



Front Elevation



Plan