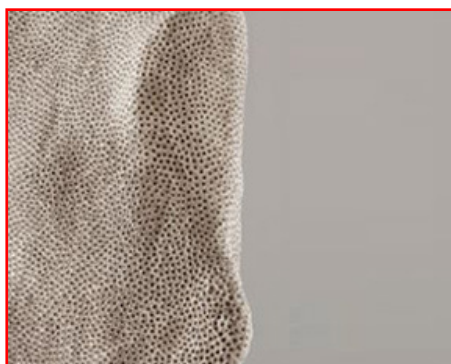


CERAMIC COLLECTION **GILLES CAFFIER**



Gilles Caffier is reinventing the hand crafted-ceramic by playing with the nature of the material and creating elegant texture with Limited Edition collections. His creations are humanistic, they are born from the hand and nature, without rejecting technology. Created out of a common interpretation of our world. Constantly pushing the boundaries, his collection shows different contrast and aspects. The jagged edge scales of the vase, featuring at FBC London is the signature style of the artist. GILLES CAFFIER's pieces are creatively chaotic, a reflection of soft extravagance which is exceedingly rare.



ECRU CERAMIC BOXES



DIMENSIONS
Small H: 140mm x D: 290mm
Large H: 210mm x D: 210mm

MATERIAL
Earthenware Clear Acrylic

DARK GREY CERAMIC BOXES



DIMENSIONS
Small H: 140mm x D: 290mm
Large H: 210mm x D: 210mm

MATERIAL
Earthenware Clear Acrylic

CORAL I

FLOWERS II



DIMENSIONS
H: 340mm x D: 210mm

MATERIAL
Earthenware-Moss Textured Narrow Vase-Limited Edition



DIMENSIONS
H: 460mm x W: 150mm x D: 310mm

MATERIAL
Stoneware-Dentated Hand Carved Vase-Limited Edition

HOLES I



DIMENSIONS
H: 605mm x W: 230mm x D: 150mm

MATERIAL
Earthenware-Hand Pierced Vase- Limited Edition

FEATHER TABLE LAMB

MARBLE TABLE LAMB



DIMENSIONS
400mm x D: 400mm
with Shade: 930mm x D: 450mm

MATERIAL
Ceramic Base with Creme Linen Shade



DIMENSIONS
H: 400mm x D: 400mm

MATERIAL
White Marble Shadde with Black Marble Base